



Mandated Reporting to Community Supporting

*Communities Keeping Children Safe
and Families Together*

Welcome!

Mandated Reporting Advisory
Committee Members
and
Public Participants

November 20, 2025

REFLECTIONS: THE “WHY” OF OUR WORK

Imagine the change that can happen
if—when—we educate and support
Educators on AB2085...

Education represents the largest
reporter category from which
allegations originate, and only **1 in
25 children** with an allegation from
Education were substantiated in
2023. A recurring trend.

California Child Welfare Indicators Project (CCWIP), 2023



Agenda

- Welcome and Connections
- Workgroup Presentations:
REVISED Implementation Plans
- “Vote” to Advance Plans to CWC
- Implementation Next Steps
- Example: Advancing AB2085
- Public Comment
- Next Steps & Closing Remarks

Housekeeping

- MRAC Members: Name and MEMBER in zoom box, cameras on if possible
- Public Participants: Name in zoom box, cameras off, and mute on
- **Chat is open – We ask that Public Participants only use the chat during the Public Comment period at the end of the meeting**
- Host will put materials in the chat

Invitation to Create Necessary Space

Micky ScottBey Jones

Adapted from her work titled "Invitation to Create Brave Space"

What part of this invitation is resonating with you right now?



Together we will bravely create “necessary” space,
Because there is no such thing as a “safe space.”

We exist in the real world,
We all carry scars, and we have all caused wounds.

We seek to turn down the volume of the outside
world;
We amplify voices that fight to be heard elsewhere.
We call each other to more truth and love.
We have the right to start somewhere and continue
to grow;
We have the responsibility to examine what we think
we know.

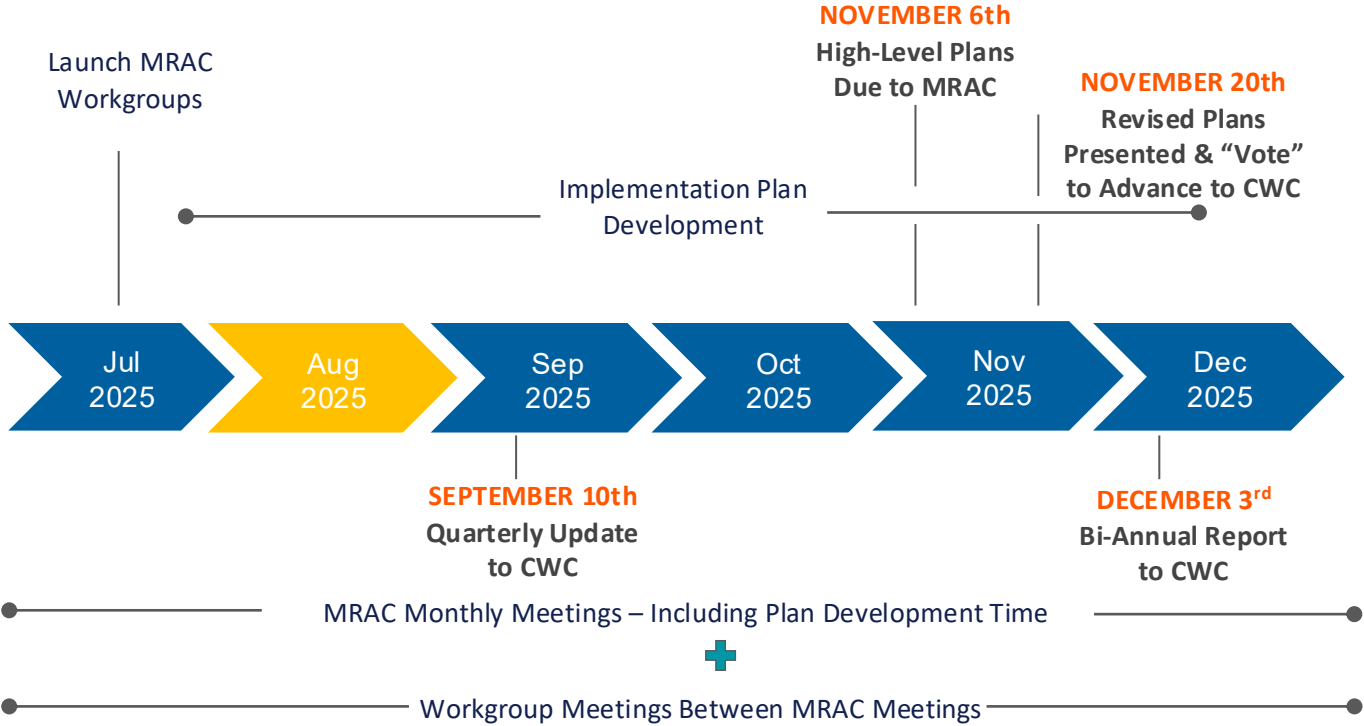
We will not be perfect.
This space will not be perfect.
It will not always be what we wish it to be,
But it will be our necessary space together.
We will work on it side by side.

The Art of Conversation Behaviors



- We acknowledge one another as equals
- We stay curious about each other
- We recognize that we need each other's help to become better listeners
- We slow down so we have time to think and reflect
- We remember that conversation is a natural way humans think together
- We expect it to be messy at times
- We use “I feel”, “I believe”, or “In my experience” statements

2025 Timeline



Presentations on REVISED Implementation Plans

TOTAL TIME: 25 minutes

GOALS

- Present final “phase 1” implementation plans based on October meeting feedback
- MRAC decides if the set of implementation plans is ready to advance to the Child Welfare Council for approval to start implementing

- **Order: 1) Training, 2) Data, 3) Community Pathways, 4) Policy, and 5) Narrative Shift**
- Introduce your members – use virtual hands
- 5 minutes to:
 - Remind everyone of your recommendations
 - State what feedback you received at October meeting
 - Present changes based on feedback
 - Invite clarifying questions and respond
- The Project Manager will take and notes on additional feedback or concerns

Full Group “Vote”

The purpose of the vote is to determine if the MRAC agrees that the set of implementation plans is ready to advance to the Child Welfare Council for approval to start implementing

- POLL QUESTION

On a scale of 1 - 5, do you agree that these plans should be advanced to the Child Welfare Council for review and approval to move into implementation?

- Discussion: If there are responses of 3 or below:
 - What are the questions or concerns?
 - How could the set of implementation plans be made stronger to move to a 4 or 5?



**Mandated Reporting to
Community Supporting**

*Communities Keeping Children Safe
and Families Together*

Implementation: What's Next



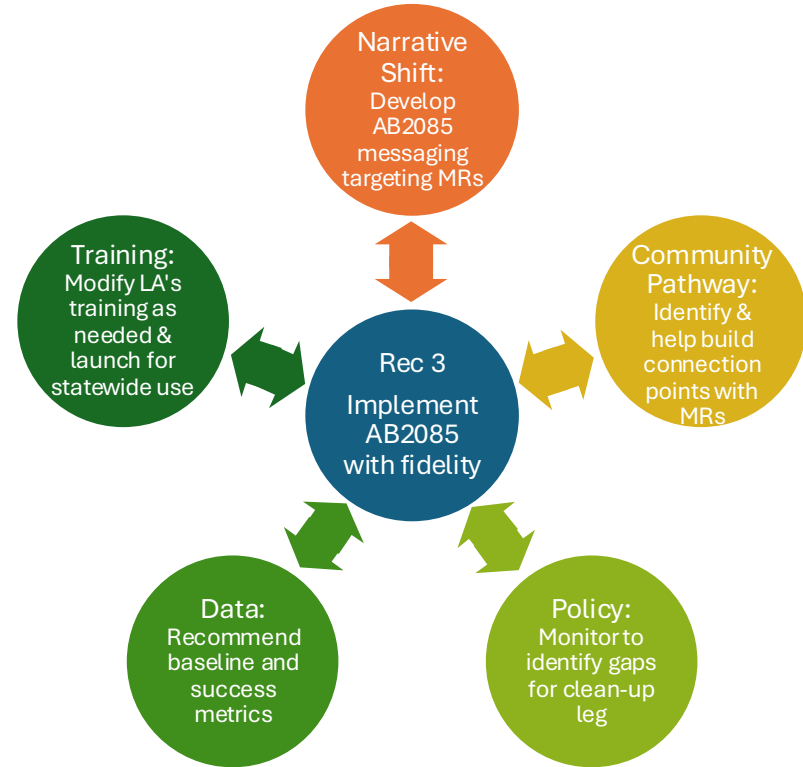
Proposed: Integrated Focus Implementation Approach

- **What it is:**

- The MRAC selects an “Integrated Focus (IF)” area to advance as a committee over a defined period of time. In most cases, the IF will be a single recommendation, but it could also be a component of several recommendations—for example, the decision-making tool.
- The Workgroups will prioritize their activities to support success of the IF area, while also continuing to advance ALL activities in their implementation plans.
- The priority will have an implementation timeline, milestones, and set of completion metrics.
- A new IF can be selected as the current one draws to completion. Ideally, the MRAC will map out 12 – 18 months of priorities.

- **Why do it:** The Integrated Focus approach: 1) Brings the MRAC together to focus on advancing one priority and shared goal, 2) Acknowledges and leverages the intersectionality of the recommendations, 3) Provides for clear opportunities for the Ecosystem to “plug into” implementation, and 4) Makes it easier to explain how we are implementing the recommendations

- **Potential Challenges/Drawbacks:** Having a single IF for the MRAC could give the perception that other recommendations are not being advanced.



Example: Integrated Focus Approach with AB2085



**Mandated Reporting to
Community Supporting**

*Communities Keeping Children Safe
and Families Together*

AB2085

- Background
- State implementation to-date
- Applying an integrated focus approach

AB2085 and the LA County Office of Education

- Brief backgrounder
- Explain LACOE's approach
- The Decision-Making Tool as an integral component of LACOE's implementation

What is Assembly Bill 2085 (Holden, 2022)?

- Addresses racial disparities and ensures families are not unnecessarily brought to the attention of the child welfare system by **revising the standards for mandated reporting**
- Limits the definition of general neglect to only include circumstances where the child is at **substantial risk** of suffering serious physical harm or illness
- Clarifies that a parent's economic disadvantage should not trigger a "general neglect" report

Amends Penal Code §§ 11165.2, 11166, and 11167



Connection to Mandated Reporting Reform

RECOMMENDATION 3: Ensure implementation of AB 2085 to fidelity

STEP IN THE RIGHT DIRECTION

- Reduces surveillance of families due to poverty
- Encourages supports over automatic reporting
- Aligns with goals of reducing racial disproportionality
- Assumes updated guidance, training, and tools for mandated reporters

CDSS Work to Implement AB 2085



RELEASE OF
ALL COUNTY
LETTER TO
INFORM ON
THE LAW AND
WHAT IT
MEANS



ROLL OUT OF A
STATEWIDE
TRAINING
LEVERAGING
THE LA AB 2085
TRAINING



ENSURE
THAT THE
GOLD
STANDARD
MANDATED
REPORTER
TRAINING
INCLUDES
AB 2085



DETERMINE
ADDITIONAL
SUPPLEMENTS TO
THE
TRAINING
TO EQUIP
MANDATED
REPORTER



CONDUCT
FOCUS
GROUPS
TO LEARN
WHAT IS
HAPPENING
ACROSS
THE STATE
TO
IMPLEMENT

Integrated Focus: Implement AB 2085

Narrative Shift: messaging to start the new way of thinking, mindset shift, and public awareness

Community Pathway: MRs know the community pathways and build connection points to address families needs with community supports

Data: what to track to know the law is being implemented, impact on the system

Policy: what is missing from the law, is there additional law needed to support MRs



Legislative Intent: Assembly Bill (AB) 2085

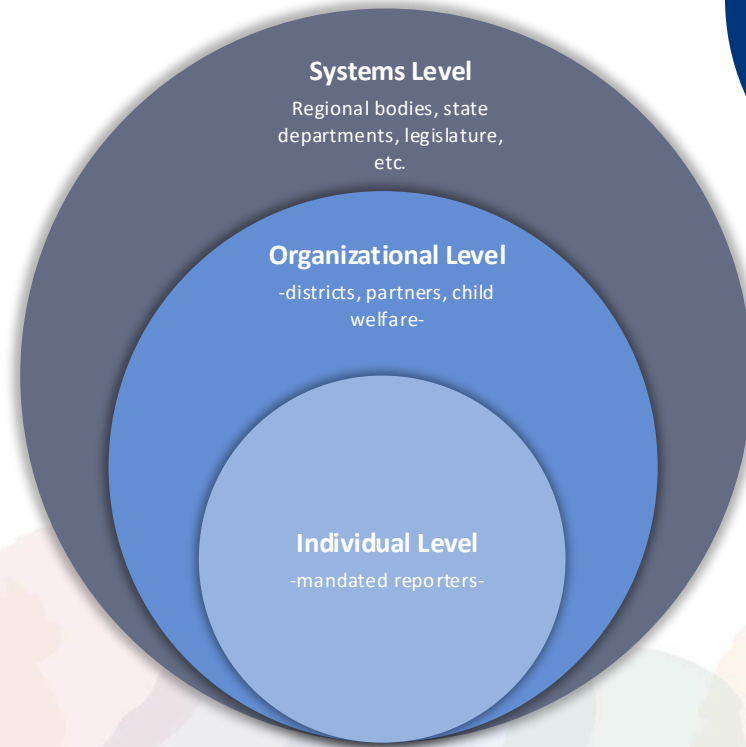
Legislative intent is to:

- Eliminate overreporting due to bias based on race and class
- Rectify conflation of poverty with general neglect
- Address racial disproportionality
- Decrease the strain on the child welfare system

Is not only the law, but presents tremendous opportunity to further whole family approaches in education!



Our Approach...



**Los Angeles County
Office of Education**



**LA COUNTY MANDATED
SUPPORTING INITIATIVE**



**GREATER LOS ANGELES
EDUCATION FOUNDATION**

Integrated Focus/MRAC: LA County's AB 2085 Mandated Supporting Initiative

Work group	Aligned Assets/Approach	Notes
Narrative Shift	<ul style="list-style-type: none"> Messaging campaign and social media content/tools for educational partners and staff 	
Training	<ul style="list-style-type: none"> Asynchronous training and live facilitation of implementation locally; 5 step decision support process and general neglect decision tree 	
Data	<ul style="list-style-type: none"> Tracking calls from education; rates of evaluated out vs. evaluated-in/investigated; substantiation rates; regional trends 	
Community Pathways	<ul style="list-style-type: none"> Strengthening knowledge/visibility of supports for families; positioning that support as a part of prevention and response to change in the law that narrows what should be called in to CPS Family Resource Finder 	
Policy	<ul style="list-style-type: none"> Integrating this legal change into policy and practice; Implementation District readiness checklist 	

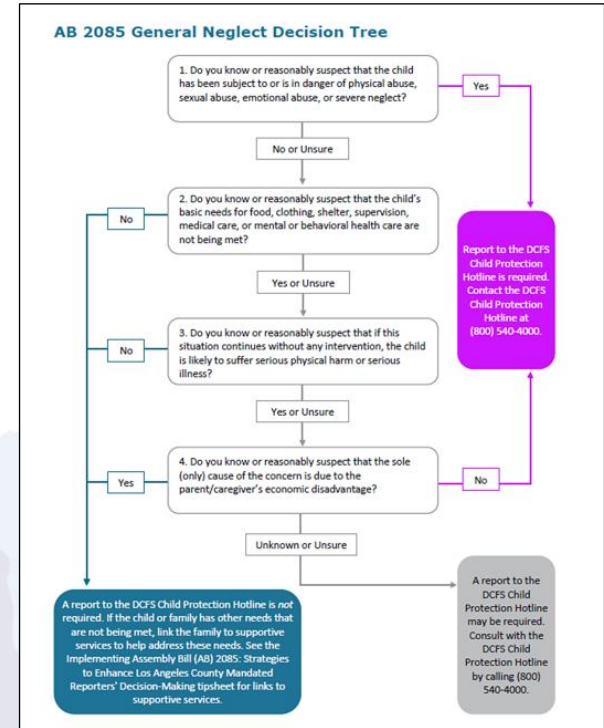
AB 2085 Decision-Support Process Overview and AB 2085 General Neglect Decision Support Tree

Five-step decision support process

1. Clarify
2. Consider
3. Consult
4. Complete
5. Decide

General Neglect Decision Tree

- “Low Tech”
- Recommendations:
 1. Make a report to DCFS
 2. Consult with DCFS
 3. Link the family to supportive services if they are in need



Pulse Check

POLL QUESTIONS

- On a scale of 1 – 5, is this “integrated focus” approach clear?
- On a scale of 1 – 5, does AB2085 seem like a good focus to test the idea?

After each poll, pause for discussion if there are responses of 3 or below:

- What are questions or concerns?
- What might move you to a 4 or 5?

Public Comment



- Raise your virtual hand
- Come off mute. Turn on your camera if you like
- Maximum of 2 minutes for comment which will go on public record
- You can put comments in the chat that will go on the record
- No response will be provided

Next Steps



**Mandated Reporting to
Community Supporting**

*Communities Keeping Children Safe
and Families Together*

- Next MRAC meeting is **Thursday, December 18th**
- Check that you have accepted the meeting invite + PLEASE register in advance
- Bi-Annual plan is due to the CWC on November 25th, for presentation on December 3rd
- Continue to work between meetings. Meet at least once as a Workgroup – your PM will follow-up to support setting a meeting and agenda
- Meetings are set for 2026 January to June—See chat for dates and watch for calendar invites
- **December music selection... Training, Community Pathway, Data?** 🎵🎵🎵



**Mandated Reporting to
Community Supporting**

*Communities Keeping Children Safe
and Families Together*

Thank you!

