

Welcome to **THE TRAINING WILL BEGIN SHORTLY**
 ENGAGING INDIGENOUS FAMILIES AND COMMUNITIES *While you're waiting...*

? *Icebreaker Question (answer in the chat)*
 What is your favorite beverage to start your morning?

🏆 *Survey & Certificate of Completion*
 Available following the training.

CONNECT WITH US!
 caltrin.org | twitter.com/cal.trin
 facebook.com/caltrin | linkedin.com/company/caltrin



1

Hi, We're CalTrin!

Who we are

- The California Training Institute
- Funded by the State of California, Dept. of Social Services, Office of Child Abuse Prevention (OCAP) to support child abuse prevention through professional development and extended learning opportunities.
- Designed for staff of family strengthening and child abuse prevention organizations in California, including Family Resource Centers, Child Abuse Prevention Councils, community-based organizations, and other child and family serving systems.

What we offer

- Live webinars & small group training
- Virtual, self-paced courses
- Job aids & other resources



This training was made possible with funding from the California Department of Social Services, Office of Child Abuse Prevention. Any opinions, findings, conclusions, and/or recommendations expressed are those of the CEBC, CalTrin and do not necessarily reflect the views of the California Department of Social Services.

2

UPCOMING TRAININGS
mark your calendars!

Visit caltrin.org to view and register for upcoming webinars or workshops

🕒 04/04 | Fostering Tribal-County Collaboration: The Cahto-Mendocino Experience

🕒 4/25 | Navigating Unconscious Bias






🕒 4/16 | Protective Factor: Concrete Support in Times of Need

🕒 5/07 | Direction, Alignment, Commitment



3

Before We Begin...

<p style="text-align: center; font-weight: bold; font-size: small;">DURING</p> <div style="display: flex; justify-content: space-around; align-items: center;"> <div style="text-align: center;">  <p style="font-size: x-small;">Access the notetaking slides now! The link can be found in the chat.</p> </div> <div style="text-align: center;">  <p style="font-size: x-small;">Review interactive features for today's training. Locate the controls on the toolbar at the bottom of your screen.</p> </div> </div> <div style="text-align: center; margin-top: 20px;">  <p style="font-size: x-small;">This presentation is being recorded.</p> </div>	<p style="text-align: center; font-weight: bold; font-size: small;">AFTER</p> <div style="text-align: center; margin-bottom: 20px;">  <p style="font-size: x-small;">Complete the survey at the end of this training to receive your Certificate of Attendance.</p> </div> <div style="text-align: center;">  <p style="font-size: x-small;">A follow-up email will be sent to all participants within two days.</p> </div>
---	---

4




Engaging Indigenous Families & Communities

Presenters:
Shannon Crossbear
Veronica Willeto DeCrane, MEd





5



Speaker SPOTLIGHT





Shannon Crossbear

Owner and Sr. Consultant, Trainer, & Facilitator
Strongheart Resource Development

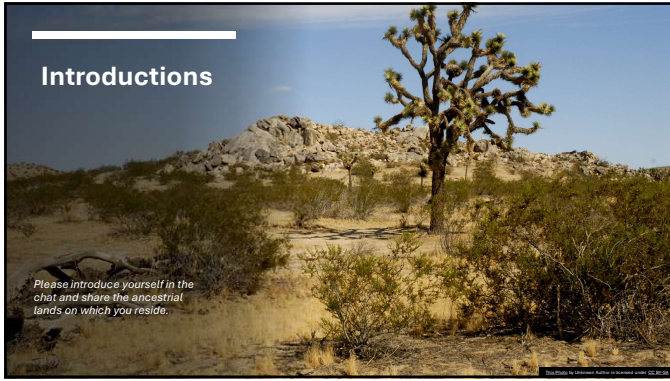


Veronica Willeto DeCrane

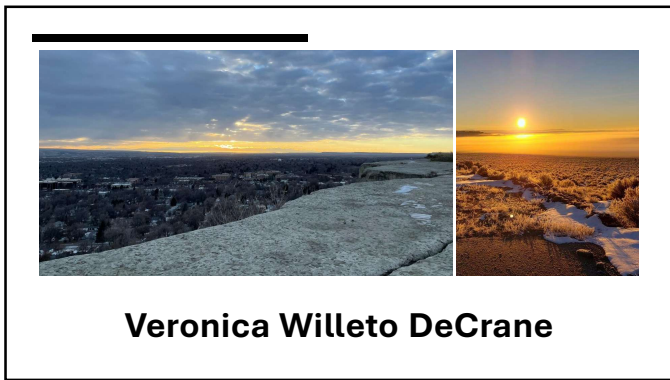
Training & Technical Assistance Manager
National Native Children's Trauma Center

©CHSD is not responsible for the creation of content and any views expressed in its materials and programming.

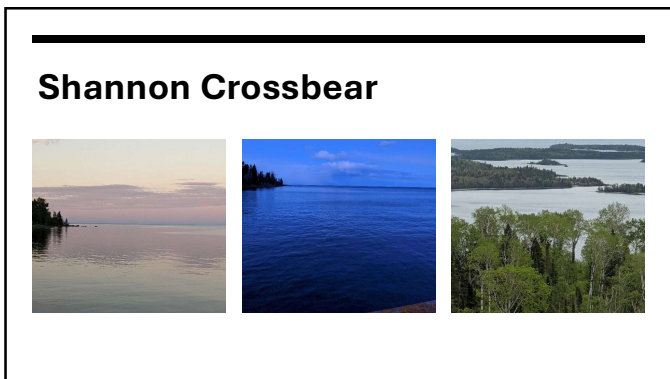
6



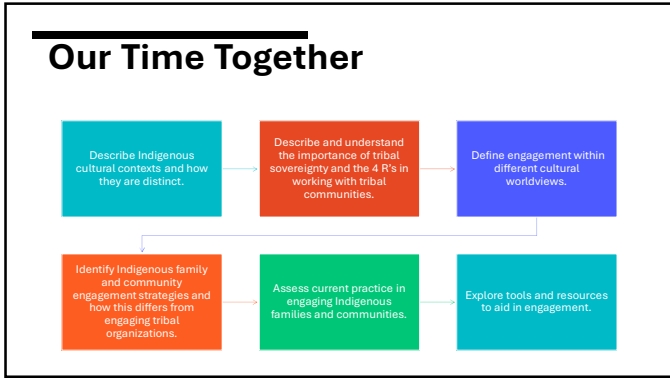
7



8



9



10

Considerations

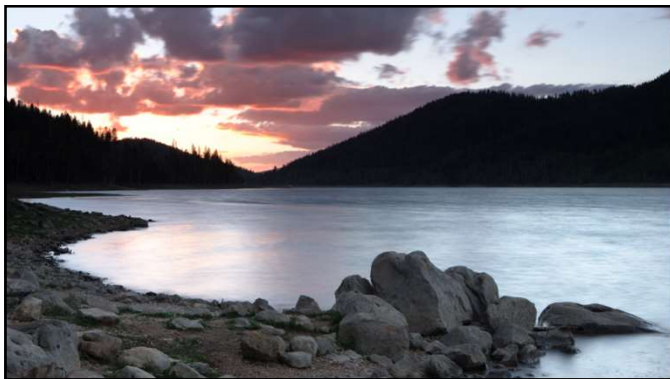
Reflect on your previous responses and make any revisions you feel are helpful.

What is the reason for the engagement?

Who specifically do you hope to engage with?

What do you hope the outcome will be?

11



12

Intentions Matter

Pur-pose-ful

/ˈperpesfel/

Adjective: having or showing determination or resolve

Similar words: determined; resolute; resolved; firm; steadfast; single-minded

Having a useful purpose


- “purposeful activities”

Intentional

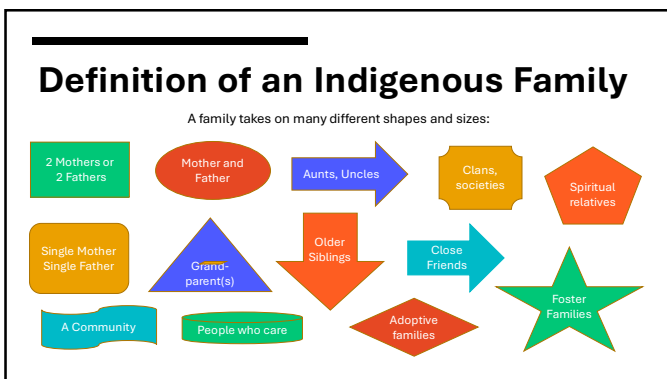
- “if it wasn’t an accident, it must have been purposeful”

13

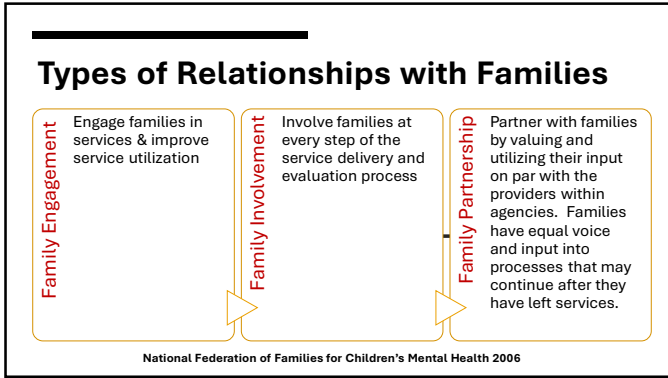
Digging Deeper



14



15



16

What does Family-Driven care mean?

Families have a primary decision-making role in the care of their own children as well as the policies and procedures governing care for all children in their community, state, tribe, territory and nation. This includes:

- o Choosing supports, services, and providers
- o Setting goals
- o Designing and implementing programs
- o Monitoring outcomes
- o Determining the effectiveness of all efforts to promote the mental health and well being of children and youth.

17

What have we learned?

Please share with your small group some engagement efforts you have tried with Indigenous families.

How have you engaged Indigenous families in the past?

Where did you connect with the Indigenous families you engaged with in the past?

18

Positive Outcomes for Families

The Child or Youth	The Family
<ul style="list-style-type: none"> Earlier access to care Better adjustment, functioning, and quality of life Faster recovery for mental health and addiction Decreases isolation Improves skills and functioning Reduces rates of relapse, recidivism, and deeper involvement with CW and JJ Improves achievement in school Better overall social/emotional wellbeing Reduces likelihood of maltreatment, teen pregnancy, incarceration, mortality 	<ul style="list-style-type: none"> Improves stable living situation Decreases parenting stress and increases parent confidence Improves access to social supports Increases ability to navigate confusing systems/services Facilitates access to insurance Teen males who live with fathers are less likely to carry guns & deal drugs Reduced sibling discord

Source: Family-Run Executive Director Leadership Association, 2022

19

Positive Outcomes for Organizations

Agency, Facility	Managed Care
<ul style="list-style-type: none"> Earlier access to services Improves quality of care Improves clinical outcomes Increases satisfaction of staff in their careers Improves data collection (quantity & quality) Improves client satisfaction with care More successful involvement in care 	<ul style="list-style-type: none"> Increases enrollment Improves coordination of care Strengthens engagement in treatment Permits better stewardship of resources Produces return on investment Provides for reinvestment Yields better clinical outcomes Improves quality of care

Source: Family-Run Executive Director Leadership Association, 2022

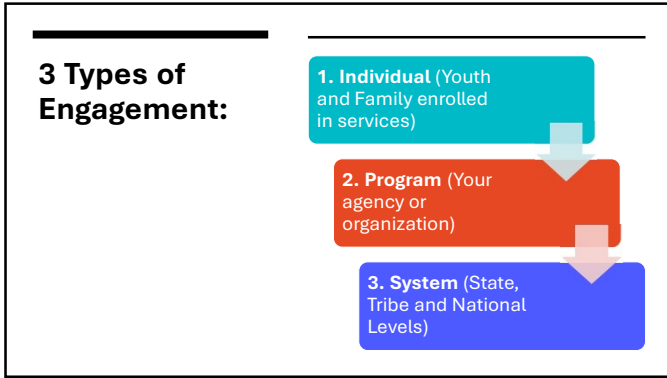
20

Positive Outcomes Overall

The System	The Community
<ul style="list-style-type: none"> More effective and efficient use of state and federal resources among systems Reduced out of home placements Shorter LOS in residential care Self efficacy reduces over-reliance on services Improves data for decision making 	<ul style="list-style-type: none"> Improves community tenure Citizens exercise participation/voice Reduces disconnection from culture Increases community awareness of children's mental health issues Improves ability to respond to community needs

Source: Family-Run Executive Director Leadership Association, 2022

21



22

- Individual**
- Choosing supports, services and providers that the youth and family wants.
 - Given accurate, complete and understandable information so that families can make an informed decision.
 - Families and youth setting their own goals.
 - Providing youth and families with opportunities to participate in peer support activities to reduce isolation and to learn from each other.
 - Giving the families and youth a sustainable voice and listening to that voice.

23

Scenario

“The parents are not concerned for their child.”

- Are we thinking about about trauma?
- Are we using a Strength-based approach?
- Have we considered culture?

24

Program

- Reviewing and encouraging use of supports, services and providers that families feel fit the community's culture.
- Involved in policy, quality assurance and evaluation activities.
- Involved in creating and delivering services.
- Providing peer support services and included in trainings and other workforce development activities.
- Giving the families and youth a sustainable voice at the program level and listening to that voice.

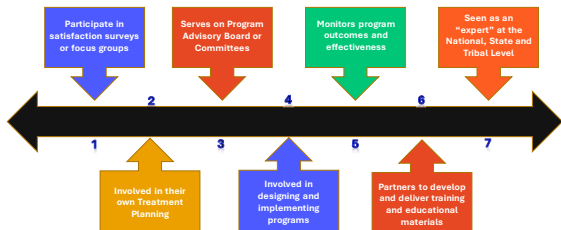
25

System

- Advocating at the national, state or tribal level for appropriate supports and services.
- Participating in tribal, statewide or national conferences as attendees or presenters.
- Developing policies and procedures governing the care for all children in their community.
- Reviewing programs compliance with standards and policies that have been developed.
- Giving the families and youth a sustainable voice at the systems level and listening to that voice.

26

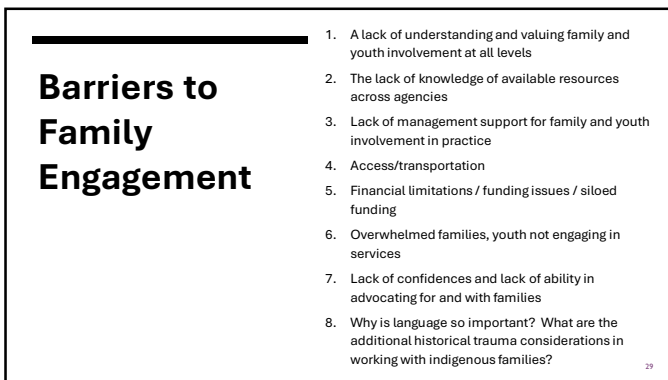
A typical path a family member might take...



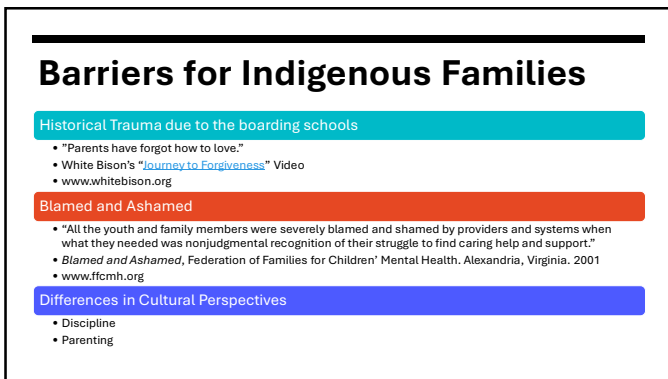
27



28



29



30

Possible Strategies

- ✓ Provide information and education about local resources,
- ✓ Provide in-person or on-line training and education on the role and value of family and youth involvement (including, but not limited to)
 - ✓ Telling your own story
 - ✓ Parent Peer Support and leadership mentoring
- ✓ Develop a consistent definition and understanding of the role of the family involvement and provide consistent consultation
- ✓ On-going training on being strengths-based and goal oriented
- ✓ Include an element of "fun" for families and youth to participate in their own treatment planning

31

Additional Strategies


Please put in "chat" any additional strategies that come to mind

- ✓ **Practices in service delivery, management and policy need to be about the family and youth, not about the budget, the program, etc.**
- ✓ Utilize cross agency committees and include family input and feedback as a regular feature
- ✓ At cross agency trainings, include how peer support works within each agency and/or include family and youth perspectives from those who have received services.
- ✓ Provide monthly communication through something like a newsletter or email that highlights specific strategies. **Include some family stories to make it real**


32

Next Step


Please share in "jamboard" the next step you will commit to taking to advance family engagement.



What strategies stood out to you?



Share one strategy you would like to implement in the next 30 days.



Name one person you will share your family engagement commitment with in the next week

33



34

Thanks for joining us!
WHAT'S NEXT?

- Survey and certificate in the chat now
- Follow-up email with resources within two days
- Watch your inbox for the next issue of *CalTrin Connect*

STAY CONNECTED FOR MORE FREE TRAINING & RESOURCES!

caltrin.org info@caltrin.org

twitter.com/cal_trin facebook.com/caltrin linkedin.com/company/caltrin

35
