



# Lassen County Comprehensive Prevention Plan



2023-2026

Submittal of CPP	
County	Lassen County
CPP Period Dates	2023 - 2026
Lead Agency	Lassen County Probation
Name	Jennifer Branning, Chief Probation Officer
Phone Number	530-251-8212
Email	jbranning@co.lassen.ca.us
Signature	<i>J Branning</i>

## Contents

Introduction and Background .....	3
Governance Structure.....	4
Cross-Sector Collaboration, Partner Engagement.....	6
Tribal Consultation and Collaboration.....	7
Integrated Core Practice Model (ICPM) .....	8
Target Candidacy Population(s) & Needs Assessment.....	9
Service/Asset Mapping .....	11
Theory of Change/Logic Model .....	12
Spending & Sustainability Plan .....	13

## Introduction and Background

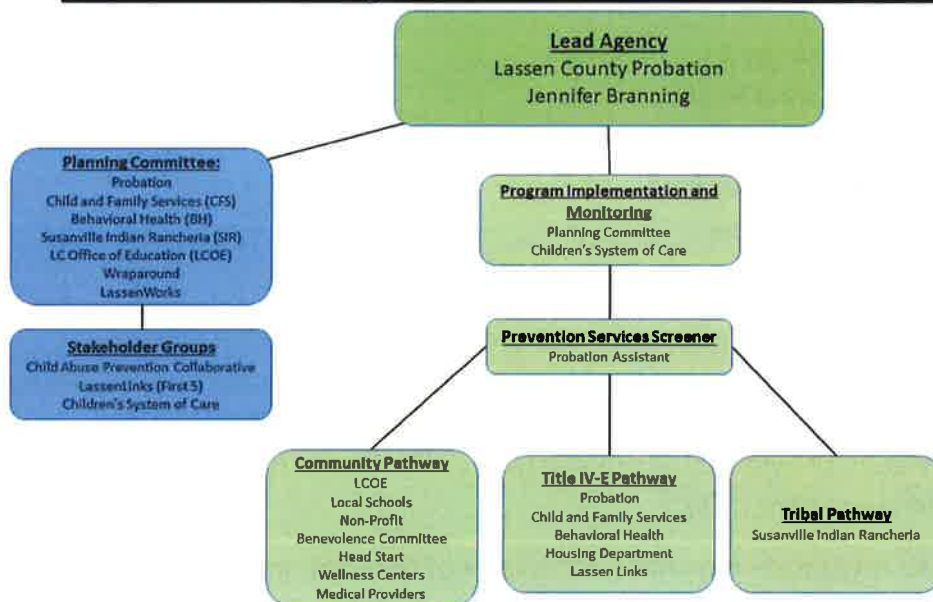
The Family First Prevention Services Act (FFPSA) was signed into law as part of Public Law (P.L.) 115–123 and has several provisions to enhance support services for families to help children remain at home, reduce the unnecessary use of congregate care, and build the capacity of communities to support youth and families. With the passage of FFPSA its goal is to shift the focus of the child welfare system from a reactionary approach to a preventative and early intervention approach. The primary objective of FFPSA is to reduce entries into foster care and increase the number of children and youth who can remain safely at home with their families. FFPSA Part I places an emphasis on improving access to evidence-based, trauma informed services in the categories of mental health, substance abuse treatment, in-home parenting skills and kinship navigation programs. This legislation has elevated the role of community-based providers as the primary access point for prevention and early intervention services and will complement California’s vision to transform from a child protection and foster care system to a child well-being system.

Lassen County is the 11th largest county geographically with a population of almost 33,000 citizens. The population is spread throughout the county with most residents living in or around the City of Susanville. The county’s services are primarily located in Susanville. Currently, many different agencies are providing prevention services. A collaborative effort started in 2023 to coordinate those services and create the Comprehensive Prevention Plan (CPP). Thereafter, the Lassen County Family First Prevention Services Planning Team was formalized and vested with the authority to start the planning process.

The Planning Team started by creating a memorandum of understanding (MOU). The MOU adopted the mission to implement community-based, trauma-informed, culturally responsive services. The goal of those services is to support and enhance the ability of parents and families to provide safe, stable, and nurturing environments to help children remain at home and reduce foster care placements.

## Governance Structure

# Lassen County's FFPSA Governance Structure



When determining a governance structure for the Comprehensive Prevention Plan, the planning team looked to leverage the pre-existing interagency leadership team that oversees the Children System of Care. Assembly Bill 2083 required the county “System Partners” to collaborate and develop a Memorandum of Understanding (MOU) to reinforce collaboration between the Children System of Care agencies. In 2020, Lassen County created the new MOU. The Interagency Leadership Team, referred locally as the Administrative Review Team (ART), serves as the governing board for the Children’s System of Care (CSOC). ART is responsible for creating the MOU and overseeing its execution ensure it reaches the overarching goals of a coordinated system of care. Service alignment and coordination begins when partner agencies agree to work together to surround the child and family with needed services, resources, and support. The MOU defines the collaboratively shared design, delivery, and management of services to children, youth, and families. In support of the MOU, the Services Allocations Team (SAT) that acts as the Interagency Placement Committee (IPC) is used to align and coordinate services during the care planning process.

The Children’s System of Care was designated to provide oversight and accountability for state and federally funded programs and services, and to otherwise act as a county’s coordinating council. The members of CSOC fully support the structure and processes contained in the MOU and provide the framework that will guide operations and the activities, decisions, and direction of each of their employees regarding children, youth, and family programming.

The FFPS planning team has delegated the administration and governance of the Comprehensive Prevention Plan (CPP) to the Administration Review Team of the Children’s System of Care.

The following System Partners participate on the interagency team:

- Lassen County Probation Department
- Lassen County Department of Health and Social Services
- Lassen County Community Social Services
- Lassen County Behavioral Health
- Lassen County Public Health
- Lassen County Office of Education
- Far Northern Regional Center
- Susanville Indian Rancheria

It is critical that all required cross-sector collaborative partners provide meaningful participation in the decision-making process. Members of the interagency team will provide their feedback following areas of the CPP: required trainings, plan development and implementation, selection of Evidence Based Practices (EBP), fidelity monitoring, and continuous quality improvement (CQI).

In adherence with the MOU from the Children’s System of Care, this interagency leadership team will embody the following elements while implementing the CPP practices in Lassen County:

Those elements are as follows:

- Utilize unified service planning to minimize impact on youth and caregivers and reduce administrative costs to partners.
- System Partners agree, to the fullest extent, allowed by law, to share necessary and relevant client specific information in order to conduct treatment, coordinate care, and assure the highest quality care is available to youth and caregivers.
- Support implementation of evidence-based programs (EBP) identified by the FFPS planning team to meet the needs of the target population.
- Monitor and act as oversight to ongoing data collection, CQI processes for the prevention pathway and EBPs.
- Ongoing fidelity monitoring of the prevention pathway process, prevention plan management, and the evaluative outcomes.
- Ongoing communication of overall initiative, implementation progress, and outcomes with key stakeholders and engagement of community members and partners in the process.

In addition, the planning team has identified two groups that will serve as stakeholder groups for FFPSA in Lassen County: Child Abuse Prevention Collaborative (CAP) and LassenLinks. The CAP Collaborative is a multi-agency collaborative focused on Child Abuse Prevention. Their purpose is to collaborate on projects, programs, and issues that affect the children and families of Lassen County. Furthermore, it serves as the Lassen County Child Abuse Prevention Council

and acts as an advisory board for initiatives within the county. This organization served as a stakeholder group providing feedback to the planning team during plan development and will to continue throughout implementation.

The other organization is called LassenLinks. This effort has been the main function of First 5 in Lassen County for the last two (2) years. The primary function of LassenLinks is to refer families to primary or secondary prevention services. The planning team determined that LassenLinks will serve as the primary stakeholder group but also the main access point for primary services within the CCP.

- Identify indicators of child and family well-being.
- Identify, discuss, and plan to mitigate gaps in services and other service delivery barriers.
- Highlight and reinforce the need for trauma-informed, culturally responsive service design and delivery.

As we move forward, we will continue to seek ongoing feedback from our governance structure, the prevention collaborative, parents, and youth with lived expertise at critical points to continue to gather information to review and modify the CPP in the future if needed.

## Cross-Sector Collaboration, Partner Engagement

Many of the required partners for cross-sector collaboration are participating partners on the FFPS planning team. The following required partners that participated on the FFPS planning team are:

- Lassen County Community Social Services
  - Lassen County Wraparound
  - Lassen County Child and Family Services
  - LassenWorks
- Lassen County Probation
- Lassen County Office of Education
- Susanville Indian Rancheria
- Lassen County Behavioral Health

During development of the CPP, intentional efforts were made to engage specific stakeholders to gather information to inform the planning process outside of the planning team meetings. The FFPS planning team members shared information, consulted, and solicited feedback from the Prevention Collaborative, LassenLinks, and the Family Connections Conference. Those community organizations have representatives from the following required and suggested partners:

- Child Abuse Prevention Council
- Community Based Organizations

- First 5
- Individuals with Lived Expertise
- Public Health
- Early Childhood Programs
- Lassen County Sheriff's Department
- Susanville Police Department
- Northeastern Rural Health Clinics

We will continue to refine our strategies and efforts to engage our target population and those with lived expertise, to ensure our strategies are culturally responsive to the needs of our community.

The System of Care Interagency Team and other community partners will promote and foster the “no wrong door” approach. Regardless of the agency door the children and families enter, we will ensure the families receive integrated, comprehensive, culturally responsive, trauma-informed, and high-quality evidence-based services. They are committed to working together to identify gaps in the current system and work to fill those gaps by maximizing resources and reducing barriers to entry and duplicative services.

## Tribal Consultation and Collaboration

Lassen County is located on the ancestral lands of the Maidu, Paiute, Pit River, and Washoe People.

The Susanville Indian Rancheria (SIR) will be included in all aspects of FFPSA: Planning, Screening, Tribal Access Point, and Monitoring.

**Planning:** Rancheria representatives attended the planning meetings and engaged in conversations about prevention services and being a community pathway access point. Susanville Indian Rancheria is included in the FFPSA MOU and a presentation was provided to the Tribal Business Committee about the commitment to tribal consultation and collaboration.

**Screening:** The screening tool for FFPSA will include a portion to identify if the client is an American Indian/Alaskan Native (AI/AN). The Screener will report this information to the Children's System of Care, of which the Tribe is a permanent member. Furthermore, we acknowledge there may be a need for the Social Services Department at SIR to liaise for another tribe if the client is not a member of our local tribes.

**Tribal Access Point:** SIR will serve as an access point for prevention services. It will be the primary pathway for tribal youth that have come to the attention of members of their community. Local Title IV-E agencies will partner with our local and other tribes to ensure culturally appropriate services are available at the local level to meet the needs of Indian children and families who are served through the community pathway.



Monitoring: Since passage of the Family First Prevention Services Act, the Title IV-E Prevention Services Clearinghouse has been conducting reviews of research on programs and services aimed at supporting children and families and preventing foster care placements when possible. However, these prevention services are not necessarily appropriate for supporting American Indian families. It is crucial that services for American Indian families address the strengths and knowledge that already exist in tribal communities, as well as the unique challenges they face, such as intergenerational trauma and grief. Therefore, throughout the development, and into the implementation of the prevention plan, regular engagement and tribal consultation will occur to ensure that our local agencies that are interfacing with tribal children and families are in compliance with the Indian Child Welfare Act.

## Integrated Core Practice Model (ICPM)

Many of the families that come to the attention of the child welfare system have experienced multigenerational or historical trauma over the individual lifespan and across generations. Identifying and understanding these traumas, preventing further trauma, and providing effective interventions are crucial to assisting children and youth traumatized by maltreatment and other stressors. It is our responsibility as service providers to ensure that trauma exposure and responses are recognized (through engagement and assessment processes) and treated (through services and intervention strategies). Therefore, identifying and understanding the impact of trauma on individuals is foundational to the implementation of the California Integrated Core Practice Model (ICPM) for Children, Youth, and Families.

Our systems are complex and challenging at times to navigate and the ICPM provides a framework to help systems build effective partnerships among agencies that mutually service individuals to improve sustainable safety, permanency, and well-being. The Lassen County System of Care has a mutual commitment to the use of the ICPM. The ICPM articulates the shared values, core components, and standards of practice that reflect how collaborative and integrated family services work best in meeting the needs of youth and families. These guidelines, with the use of complementary evidence-based practices, acknowledge that a comprehensive, unified, and individualized plan that incorporates community-based services and supports for children and their families at risk of serious challenges will improve the outcome of services.

The values and principles of the ICPM include the following:

Values:

- Family-Driven and Youth-Guided
- Community-Based
- Culturally and Linguistically Competent

Principles:

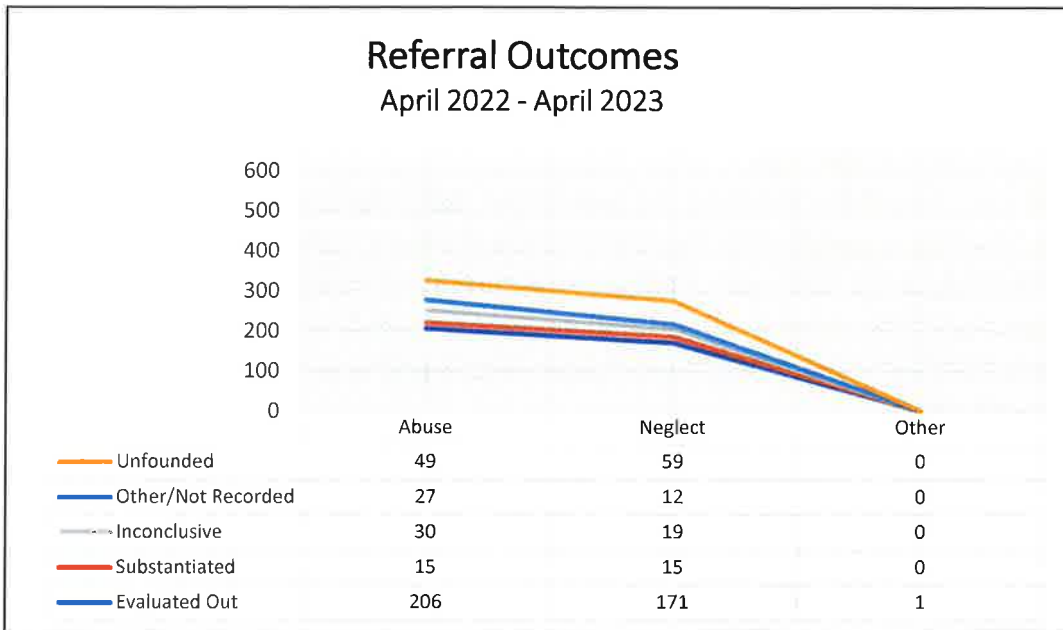
- Family Voice and Choice
- Team-Based
- Natural Supports
- Collaboration and Integration
- Community- Based
- Culturally Respectful
- Individualized
- Strengths-Based
- Persistence
- Outcome-Based

The ICPM will be further supported through our commitment to the workforce training and development requirements by utilizing the statewide curriculum that is delivered through the Regional Training Academies (RTAs) and other applicable and appropriate trainings to support our overall goals.

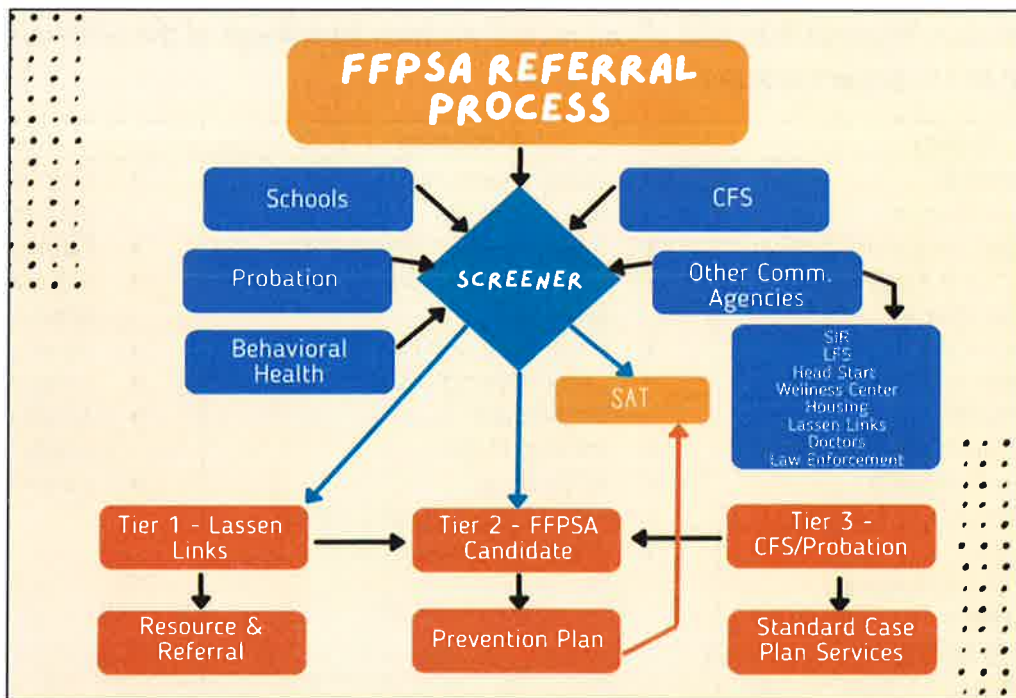
## Target Candidacy Population(s) & Needs Assessment

Throughout the planning process the planning team reviewed a variety of data from different sources to determine target candidacy populations for prevention services. These were used in conjunction with the service asset mapping to identify our priority population to be served through Lassen Links, Wraparound, parenting support, and motivational interviewing. KidsData calculates Lassen County is home to 5,251 children. Furthermore, the Casey Family Community Opportunity Map indicates 41% of households in Lassen County are living 200% below the federal poverty level and 19% of those households have children. However, poverty does not equal neglect, it is merely a risk factor. At times, poverty can be mistaken for neglect resulting in high rates of child welfare referrals. The National Council of Juvenile and Family Court Judges recommends we reconsider the link between poverty and child neglect. This can help prevent the unnecessary removal of children, allow for the opportunity to provide concrete support to protect children and strengthen families to promote healthy development and well-being of children and their families. Service provider and community members interviews identified several community factors that Lassen County could be doing better to improve well-being.

All data for a population as small as Lassen County's needs to be interpreted with caution, but even so, according to the data from Cal Berkley Indicators, KidsData, The Casey Family and SafeMeasures neglect was the most common type of allegation in Lassen County. With the creation of the Social Services Department at Susanville Indian Rancheria, an increase in referrals for services for native youth has resulted in Native youth currently being overrepresented in our system. With the current overrepresentation, it further reinforces the importance of our partnership with Susanville Indian Rancheria.



Reviewing our Child Welfare and Probation data, neglect referrals evaluated out through the Child Welfare Pathway was identified as our primary focus of secondary preventative services. The figure below shows our pathway to services.



As mentioned above, community factors were identified as barriers to access to our current services array. Those community factors were poverty, limited public transportation, lack of affordable housing, quality and capacity of childcare, stigma, and knowledge of services. Our approach to mitigate these would be intervening with the whole community as the focus of change. We are committed to implementing health promotion activities by utilizing the

Protective Factors framework and/or interventions that reinforce the sense of community ownership by leveraging existing community capacity and social capital.

### Service/Asset Mapping

Lassen County is a rural community, we experience high employee turnover. Therefore, program consistency and monitoring and collating of data is impacted. A positive aspect of our rural community is the teamwork amongst local service providers, working together to ensure we are not duplicating services but instead meeting the needs of our community. Our FFPSA planning team is a good representative of how differing parts of our community come together to serve each other.

In collaboration with FFPSA system partners and LassenLinks, a County Resource guide was updated and is now live on <https://www.lassenlinks.org/lassen-resource-guide> where community members can easily access critical informal about services. To create the guide every resource was contacted to provide permission to include their information, update their information and obtain eligibility information if appropriate. Through the creation of the resource guide, we were able to identify any gaps in services. The stakeholder surveys helped to determine there is an adequate amount of services within Susanville, a rural community. Through this process, the planning team identified the following gaps and barriers: transportation, long wait-lists, lack of community member knowledge of the services that are available, and in-patient programs.

Primary	Secondary	Tertiary
<ul style="list-style-type: none"> <li>● 13 Preschools</li> <li>● 11 School Districts</li> <li>● Faith-Based supportive services</li> <li>● Lassen County Prevention and Education Program</li> <li>● Alliance for Workforce Development</li> <li>● LassenWORKS</li> <li>● Lassen County Child and Family Commission (First 5)</li> <li>● Pathways to Child and Family Excellence</li> <li>● Lassen County Housing</li> <li>● Lassen Hearts</li> <li>● Lassen Child and Family Resources</li> <li>● Banner, Northeastern, and Lassen Indian Health Clinic</li> <li>● Lassen County Public Health</li> <li>● Susanville Indian Rancheria Education Program</li> </ul>	<ul style="list-style-type: none"> <li>● Lassen Intervention</li> <li>● Lassen Wellness</li> <li>● Lassen County Diversion</li> <li>● Private Provider Therapeutic Services</li> <li>● Lassen County Behavioral Health</li> <li>● Lassen County Family Solutions Wraparound</li> <li>● Patients’ Rights</li> <li>● Judy’s House</li> <li>● MAMA Crisis Pregnancy Center</li> <li>● Good Grief Support Group</li> </ul>	<ul style="list-style-type: none"> <li>● CR Thrift Store</li> <li>● Crossroads Ministries</li> <li>● Salvation Army</li> <li>● Mikayla Child Advocacy Center</li> <li>● Lassen Resiliency</li> <li>● Lassen Family Services</li> <li>● Lassen County Child and Family Services</li> <li>● Lassen County Probation</li> </ul>

The current service array meets the needs of some of the youth and families in Lassen, but there are also many needs that are not being met due to multiple barriers to accessing services.

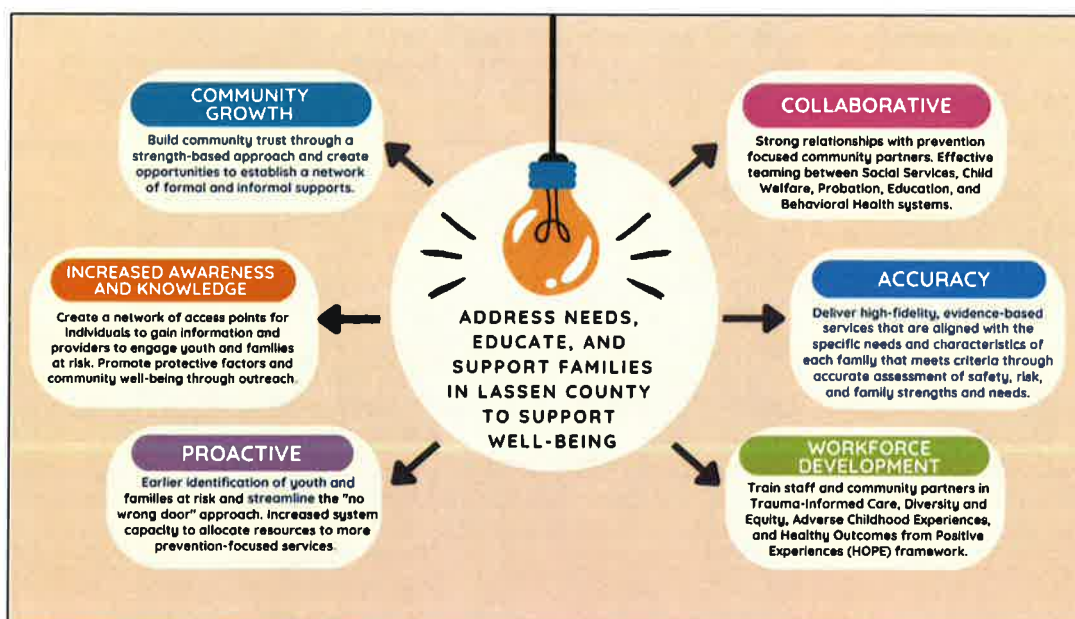
Along with the barriers mentioned above, there are other factors which include stigma, fear of Child Welfare and Probation, and perception of a lack of confidentiality due to Lassen being a small community.

Since our target population is evaluated out neglect referrals, Lassen County Child Welfare has committed to sending out a contact letter to those families offering services. If there is no contact, there will be follow up by the FFPSA screener because we know that authentic engagement of the family is necessary for them to feel comfortable participating in services.

The main adjustment to our current services is expanding our Lassen County Wraparound Program. In a small county bringing in new evidence-based programs is difficult. To ensure sustainability the planning team decided to utilize what was already here and functioning well. Our local Wraparound has a proven track record of positive outcomes and mitigating out of home placements. Lassen County Wraparound has already been serving a small number of our target population through their prevention caseload. To accommodate the increased caseload, they hired additional staff, and all facilitators are certified in Child and Adolescent Needs and Strengths (CANS). Furthermore, to ensure High-Fidelity Wraparound and accountability are achievable, the program has made the necessary changes and implemented practices to receive certification through CDSS.

## Theory of Change/Logic Model

The planning team developed the following logic model to foster system changes that describe the efforts, activities, and intended outcomes for the youth and families in Lassen County with the goal of early detection and connection to prevention services for youth and their families that experience maltreatment or who are at risk of foster care placement. The logic model helps connect the goals of our local cross-sector collaboration to align with the state and federal vision for prevention.



These efforts will provide the opportunity that all youth and families in Lassen County experience healthy growth and development within a safe, stable, and supportive community. These actions also intend to improve youth and family functioning through increased access to community services. As the number of youth and families we serve increases, the number of children served by Child Welfare or Probation will decrease.

## Spending & Sustainability Plan

Included in the chart below are the funding sources the planning team identified that could be leveraged to support our primary, secondary, and tertiary prevention services. Our local system partners are committed to sharing resources to provide early intervention through a coordinated effort to maximize potential reimbursement. These funding streams are currently being built upon to support prevention and active efforts are in place to explore the feasibility of braided funding to drawdown funds outside of the FFPSA state and federal grant funding. To maximize sustainability the planning team has been intentional in our efforts to leverage current services that are already functioning and supporting our community. Furthermore, it is the intent to continue to be diligent and apprised of other potential new funding opportunities.

Available Funding Sources for Sustainability:		
Federal	State	County
Promoting Safe and Stable Families (PSSF)	County Based Medi-Cal Administration Activities (CMAA)	Juvenile Probation
CalWorks	Child and Family Team and CANS	Child Welfare Services
Child Abuse Prevention Intevention and Treatment (CAPIT)	FFPS Part IV: Wraparound Aftercare Services	Behavioral Health Sevices
Community Based Child Abuse Prevention (CBCAP)	Family Urgent Response System (FURS)	First 5
Child Welfare Planning Allocation for Child Welfare Services and Foster Care Assistance	Continuum of Care Reform (CCR) - Resource Family Approval Program (RFA)	Office of Education
Family Focused Treatment Association (FFTA)	Commercial Sexual Exploitation of Children (CSEC)	Susanville Indian Rancheria
Title IV-E: CalAim	Mental Health Services Act (MHSA)	Far Northern Regional Center (FNRC)
	Housing Grants: Bringing Families	Public Health:
	Housing Grants: HSP, HA, HDAP	Foster Youth Services
	Housing Grant: Home Safe Program	Independent Living Program
	Department of Vocational	Lassen Community College
	CalWorks - Home Visiting Program	Lassen Family Services
		Lassen Intervention/Lassen Wellness
		Local School Districts
		Transportation
		Public Transportation: Lassen Rural Bus
		Veteran Services



Lassen County plans to use the FFPS grant for the following:

				Funding Sources:		
				CDSS	Federal	Other
Allocations:				\$ 375,000	\$ 102,000	
Activity/Service:	Fiscal Agent:	Timeframe:	Restrictions:	FFPS State Block Grant Probation/Child Welfare	Federal	Private Funding
<b>Delivery of Services/Implementation:</b>						
Administrative Costs and Staffing Support	Lassen County Probation & Child Welfare			\$ 75,000		
Motivational Interviewing - Training/Training Expenses	Lassen County Probation & Child Welfare			\$ 25,000		
Client Engagement for Program Input and Feedback	Lassen County Probation & Child Welfare			\$ 10,000		
Community Outreach and Services	Lassen County Probation & Child Welfare			\$ 15,000		
Data Collection and Analysis	Lassen County Probation & Child Welfare			\$ 25,000		
Personnel Costs for Primary and Secondary Service Delivery and Other Related Expenses (such as EBP like Wraparound)	Lassen County Probation & Child Welfare			\$ 225,000		
				Total Budgeted:	\$ 375,000	\$ -
				Remaining Balance	\$ -	\$ 102,000

Please note these amounts are estimated and will be adjusted as final costs are determined through the acquisition and expansion of services as implementation begins.

The System Partners are committed to using funds strategically, not only to meet the short-term goals or fill the gaps, but to move our children’s system of care to a truly more preventative system that focuses on strengthening families and communities.







KIM JOHNSON  
 DIRECTOR

GAVIN NEWSOM  
 GOVERNOR

**ATTACHMENT B- ASSURANCES TEMPLATE**

**Family First Prevention Services (FFPS) Program Assurances**

County of LASSEN

Instructions: These assurances must be submitted by local child welfare services (CWS) and probation agencies that opt into the FFPS Program and are a required component of the local comprehensive prevention plan (CPP). These assurances will remain in effect unless changed by the submission of updated assurances and an updated CPP. Any changes to the local CPP must include resubmission of these assurances.

**Title IV-E Prevention Program Reporting**

In accordance with section 471(e)(5)(B)(x) of the federal Social Security Act and California Welfare and Institutions Code (WIC) section 16587(d)(9), LASSEN COUNTY PROBATION AND CHILD WELFARE, (Name(s) of participating child welfare services and/or probation agency) is providing this assurance, consistent with the local CPP and the California Title IV-E Prevention Services State Plan, to collect and report to the CDSS information and data required for the FFPS Program, including all information and data necessary for federal financial participation, federal reporting, to determine program outcomes, and to evaluate the services provided. This includes, but is not limited to, child-specific information and expenditure data.

**Child Safety Monitoring**

In accordance with section 471(e)(5)(B)(ii) of the federal Social Security Act and California WIC sections 16587(d)(7)-(8), the LASSEN COUNTY PROBATION AND CHILD WELFARE (Name(s) of participating child welfare services and/or probation agency) assures it will provide oversight and monitoring of the safety of children who receive services under the FFPS Program, including oversight and monitoring of periodic risk assessments throughout the period of service delivery. The agency further assures it will monitor and oversee the safety of children and periodic risk assessments for children who receive FFPS program services through its contracted community-based organizations. If the local child welfare and/or probation agency determines the child's risk of entering foster care remains high despite the provision of the services, the agency assures that it will reexamine the child's prevention plan during the 12-month period. In the case of an Indian child, the agency assures the assessments, and any reexamination of the prevention plan will be conducted in partnership with the Indian child's tribe.

**Workforce Development and Training**

In accordance with section 471(e)(5)(B)(viii) of the federal Social Security Act, the LASSEN COUNTY PROBATION AND CHILD WELFARE (Name(s) of participating child welfare services and/or probation agency) assures it will adhere to the FFPS training plan as outlined in the California Title IV-E Prevention Services State Plan, and ensure caseworkers within both the community and Title IV-E agency pathways under the FFPS program are supported and trained in assessing what children and their families need, connecting to the families they serve, accessing and delivering the needed trauma-informed and evidence-based services, overseeing and evaluating the continuing appropriateness of the services, and all other foundational requirements, including but not limited to, understanding how the requirements of the federal Indian Child Welfare Act (ICWA) and implementing state laws intersect with prevention services provided through the community based and Title IV-E agency pathways.

### **Trauma-Informed Service Delivery**

The LASSEN COUNTY PROBATION AND CHILD WELFARE (Name of participating child welfare services and/or probation agency) assures that in accordance with section 471(e)(4)(B) of the federal Social Security Act and California WIC section 16587(d)(6), each service in the CPP provided to or on behalf of a child will be provided under an organizational structure and treatment framework that involves understanding, recognizing, and responding to the effects of all types of trauma, including historical and multigenerational trauma, and in accordance with recognized principles of a trauma-informed approach and trauma-specific interventions to address trauma's consequences and facilitate healing.

### **Model Fidelity for Evidence-Based Programs and Continuous Quality Improvement**

In accordance with section 471(e)(5)(B)(iii)(II) of the federal Social Security Act and California WIC sections 16587(d)(10) and 16587(d)(11)(A), the LASSEN COUNTY PROBATION AND CHILD WELFARE (Name of participating child welfare services and/or probation agency) assures that services provided in the CPP will be continuously monitored to ensure fidelity to the practice model, to determine the outcomes achieved, and to refine and improve practices based upon information learned, using a continuous quality improvement framework, developed in accordance with instructions issued by the CDSS. The agency agrees to participate in state level fidelity oversight, data collection, evaluation, and coordination to determine the effectiveness of a service provided under the FFPS program.

### **Equitable and Culturally Responsive Services and Supports**

In accordance with the Governor's Executive Order N-16-22, and consistent with California Five Year Prevention Services State Plan, the LASSEN COUNTY PROBATION AND CHILD WELFARE (Name of participating child welfare services and/or probation agency) assures that the implementation of interventions, services and supports should be equitable, culturally responsive and targeted to address disproportionality and disparities experienced by black, indigenous, and people of color, as well as lesbian, gay, bisexual, transgender, queer and plus (LGBTQ+) children and youth.

**Coordination with Local Mental Health**

In accordance with section 471(e)(10)(C) of the federal Social Security Act and California WIC section 16588(f)(3), the LASSEN COUNTY PROBATION AND CHILD WELFARE (Name of participating child welfare services and/or probation agency) assures the agency will establish a joint written protocol, based on the model developed by the CDSS and Department of Health Care Services for use among the child welfare agency, probation department, behavioral health agency, and other appropriate entities to determine which program is responsible for payment, in part or whole, for a prevention service provided on behalf of an eligible child.

**Signatures**

Signature: These assurances must be signed by the official with authority to sign the CPP and submitted to the CDSS for approval.

Barbara Jongo

Signature of Authorized CWS Representative

8/2/2023

Date

J Branning

Signature of Authorized Probation Representative

7/31/2023

Date

