

Welcome to

PRIMARY PREVENTION SYSTEM IMPLEMENTATION: THE MAGNOLIA COMMUNITY INITIATIVE

THE TRAINING WILL BEGIN SHORTLY

While you're waiting...

? *Icebreaker Question (answer in the chat)*

What is your favorite spring activity?

🏆 *Survey & Certificate of Completion*

Available following the training.

CONNECT WITH US!


caltrin.org
twitter.com/cal_trin

facebook.com/caltrin
linkedin.com/company/caltrin


1

Before We Begin...

DURING




Access the presentation slides and resource sheet now! The links can be found in the chat.




This presentation is being recorded.

DURING




Review interactive features for today's session. Locate the controls on the toolbar at the bottom of your screen.

AFTER



Complete the survey at the end of this webinar to receive your Certificate of Attendance.



A follow-up email will be sent to all participants within 2 days.

2



CALTRIN
California Training Institute

This training was made possible with funding from the California Department of Social Services, Office of Child Abuse Prevention. Any opinions, findings, conclusions, and/or recommendations expressed are those of the CTRIN/CaTrin and do not necessarily reflect the views of the California Department of Social Services.

Hi, We're CalTrin!

Who we are

- The California Training Institute
- Funded by the State of California, Dept. of Social Services, Office of Child Abuse Prevention (OCAP)
- We support child abuse prevention in California through professional development and extended learning.

Training Domains



Direct Service Delivery Skills



Evidence-Based/Evidence-Informed Service Delivery



Management & Leadership Development



Trauma-Informed Systems

3

THE CHILD, FAMILY, AND COMMUNITY WELL-BEING LEARNING SERIES



4

OUR INTENTION FOR THE LEARNING SERIES

- Create opportunities for Collaborative Counties to learn from subject matter experts and to engage one another about how to create a prevention infrastructure with shared responsibility and accountability among cross-sector partners, including the challenges and complexities of implementing / operationalizing their Comprehensive Prevention Plans
- Strengthen cross-sector relationships by learning together between County child welfare, juvenile justice and behavioral health, education, community-based service providers, family resource centers, local Child Abuse Prevention Council, tribal partners, and parents/youth with lived experience.
- Position Counties' to better examine and build their capacity and ability to effectively partner and engage with parents and youth with lived experience.
- Support Counties in measuring and decreasing racial disproportionality.
- Anchor service delivery systems in primary prevention and extend "downstream" from there, prioritizing resources in the most "upstream" way possible

5

THE CHILD, FAMILY, AND COMMUNITY WELL-BEING LEARNING SERIES

TODAY'S TOPIC: PRIMARY PREVENTION SYSTEM IMPLEMENTATION: THE MAGNOLIA COMMUNITY INITIATIVE

6

**THE CHILD, FAMILY, AND COMMUNITY
WELL-BEING LEARNING SERIES**

OUR PRESENTERS



KHUSH COOPER, MSW, PhD
President & CEO, Implematics
Adjunct Professor, UCLA



ALEX MORALES, MSW
Prevention Mindset
Institute Partner



RON BROWN, PhD
President & CEO, Children's Bureau
of Southern California




7




8

INITIATION




9




10

ABOUT MCI

- **Magnolia Community Initiative (MCI)** is an approach for improving population well-being at a community scale
- Focusing on a 500-block area in Los Angeles as an incubator for new ideas and innovative approaches, MCI rethinks how local resources and residents can work together to strengthen families.
- Since its inception, MCI has grown into a nationally applicable framework for community-driven change, with more than 70 public and private organizations joining forces with parents to help children and families flourish



magnolia
community initiative



11

Magnolia Community Initiative
Supportive Communities • Strong Families • Thriving Children





12

OUR OBJECTIVES

- 1 To evolve systems to support activities and communications within and among organizations that improve community outcomes.
- 2 To build a network of support for residents to act as a positive force in their families and in their neighborhoods.
- 3 To strengthen parents' ability to manage their children's needs and promote development.
- 4 To develop scalable and sustainable solutions within the MCI community and for other cities and communities across the nation.



13



14

REFLECTIONS



15

EVOLUTION

16

How We Do It

We draw from the best evidence and theory across sectors to develop effective, sustainable strategies for change.

17

WHAT MAKES MCI UNIQUE?

- 1 **Holistic Approach**
We work with support and service organizations to change institutional approaches from emphasizing delivery of isolated human services (such as food stamps or child support services) to a preventive and holistic approach that provides assistance to each client.
- 2 **Real-Time Data**
Combining a state-of-the-art metrics dashboard with frequent measurements, we collect and share actionable data to inform partners' efforts and galvanize residents to make changes.
- 3 **Speed**
Our learning system helps partner organizations align their activities and move quickly from ideation to adoption and testing of new practices and policies.

18

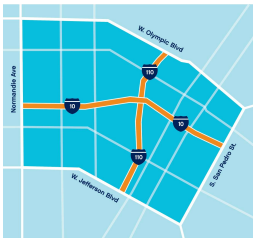
WHAT MAKES MCI UNIQUE?

- 4** **Community Connections**
We identify and train ambassadors to foster relationships in their neighborhoods.
- 5** **Knowledge Sharing**
MCI convenes workgroups so that community members and organizational partners can exchange ideas, confront challenges and share resources.
- 6** **Empathy**
Our approach to every interaction is characterized by mutual respect and understanding.
- 7** **Support for Staff**
Changing the way organizations operate can require staff to think and work differently. We help staff navigate these new demands.



19

COMMITTED TO IMPROVING OUTCOMES FOR OUR COMMUNITY'S CHILDREN



- 65%** live in poverty
- 35%** are overweight
- 78%** are not proficient in reading by third grade
- 40%** will not graduate from high school



20

THE MCI APPROACH TO NEIGHBORHOOD TRANSFORMATION

Listening, Learning & Getting Stronger

We listen to parents and other residents and empower them as agents of change



21

USING DATA FOR RESIDENT AND COMMUNITY ENGAGEMENT

magnolia community initiative

Community Survey



How well is our community doing?

Community Dialogues



Mapping Local Neighborhoods



Introducing EDI Results



How well are our kids doing?

22

OUR COMMUNITY DIALOGUES: WHAT WILL WE DO?

Social Connections

- Talk more to neighbors, start hearing others
- Be good examples to others and that the simple gesture of a smile or pleasant look to someone else may help create social connections.

Community Belonging

- Integrate themselves in the community
- Seek counseling as a means of personal help
- Form groups to see what can be done community-wide to make things better, have police involvement in groups and protecting our children
- Make positive changes at home and start talking to neighbors to see what they can do and invite other neighbors as well.

Personal Resiliency

- Help motivate people who have little flexibility, making their children feel important to them, talking more to their children



23



24

25

[illegible]

26

[illegible]

27

REFLECTIONS

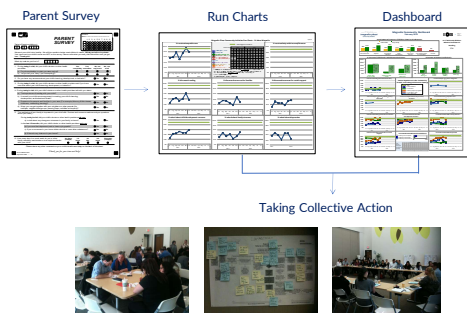
28

MEASURING COMMUNITY LEVEL CHANGE

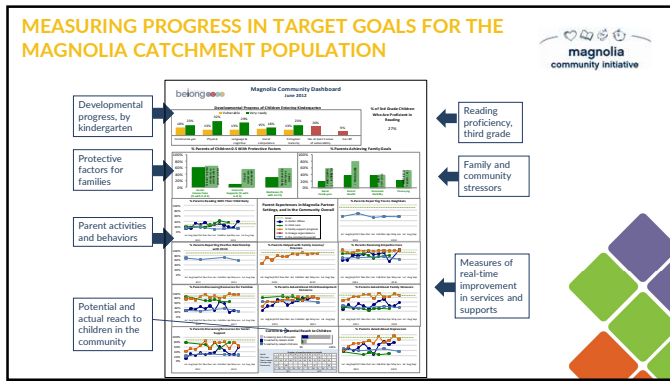
- Community measurement is an emerging field of research
- Culture change takes time, and interventions need to be consistent over a long period
- We're learning as we go, doing our best to be responsive and nimble
- All our partners in this are doing the work voluntarily

29

SHARING DATA FOR ACTION



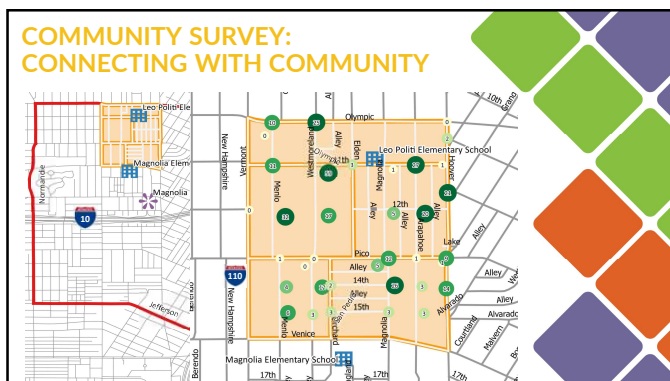
30



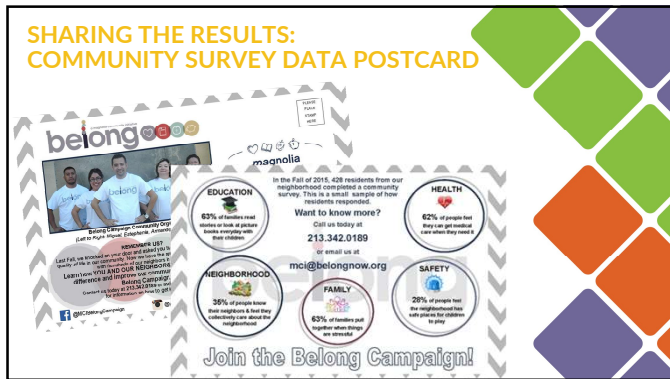
31



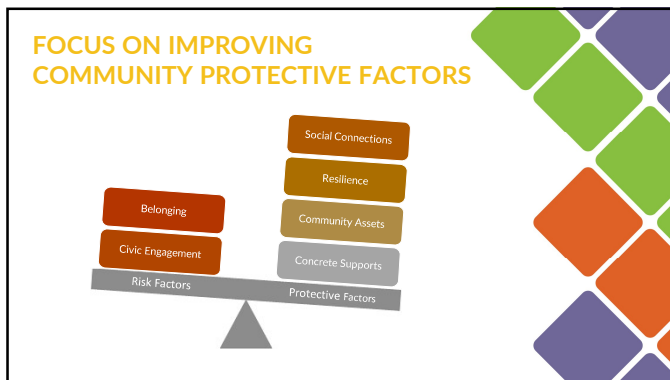
32



33



34



35



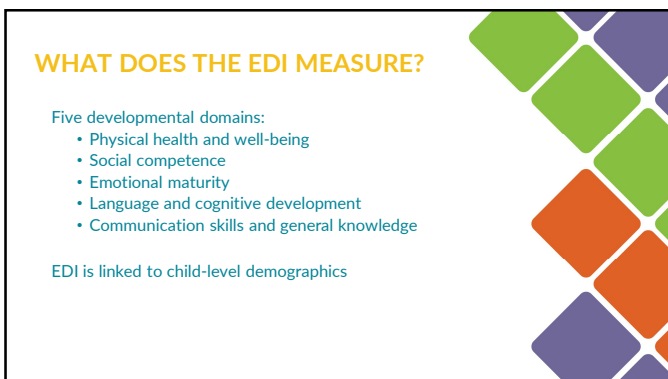
36



37



38



39

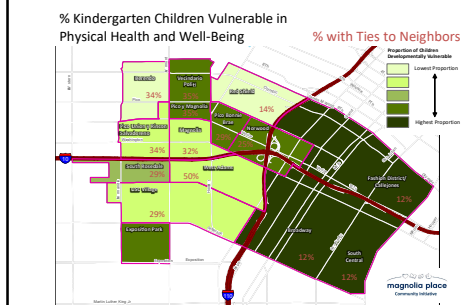
HOW IS THE EDI INFORMATION PRESENTED?

- EDI data are presented using GIS mapping
- Each child's EDI form is geographically coded according to the home address of the child
- The EDI data maps allow stakeholders in the community to discuss and address areas of young children's vulnerability
 - Geographically to identify areas of greatest need
 - To socio-economic indicators, to help understand the reasons for observed outcomes
 - To service data to identify where there are service gaps
 - Over time to see how changes in policies and place-based initiatives may be contributing to children's development



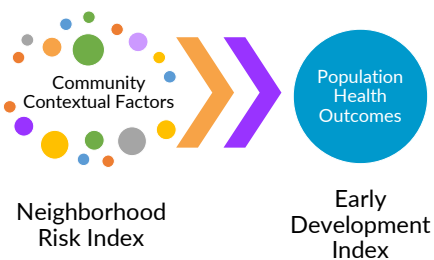
40

USING POPULATION DATA FOR LEARNING, ENGAGEMENT AND COLLECTIVE ACTION



41

THINGS WE ARE LEARNING: HOW POPULATION LEVEL MEASURES FACILITATE SHARED LEARNING



42

[illegible]

LESSONS LEARNED

46

OPEN DISCUSSION

47

Thanks for joining us!
WHAT'S NEXT?

- Survey and certificate in the chat now
- Register for Building the Community Pathway: Part 1
- Recording and resources available within two days
- Watch your inbox for the next issue of CalTrin Connect



STAY CONNECTED FOR MORE FREE TRAINING & RESOURCES!



48
