

1



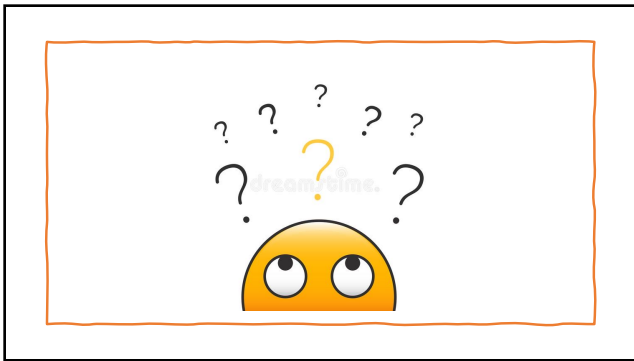
2



3



4



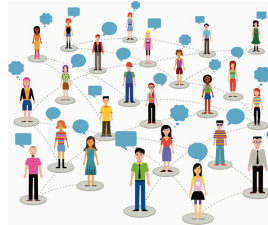
5



6

Social Ties & Social Capital

- **Mistrust and a lack of durable or reliable relationships** (Desmond 2012; Hartigan 1999; Miller-Cribbs & Farber 2008; Smith 2007)
- **Even relatives, romantic partners, and friends may be viewed with distrust** (Burton et al. 2009; Desmond 2012; Edin and Kefalas 2005; Levine 2013)
- **Social capital = social connections that are convertible into economic resources** (e.g., job referrals, loans, a place to crash)
- **Previous research focuses on the use-value of social ties, even as studies show real relational needs that are unmet**



7

Why does social poverty matter?

- **Social isolation and lacking emotional supports are tied to poorer health behaviors and mental and physical health outcomes, including mortality** (Cacioppo & Patrick 2008; Holt-Lundstad et al. 2015)
- **Emotional supports during pregnancy are associated with a lower risk of postpartum depression and better birth outcomes** (Collins et al. 1993; Luecken et al. 2013; Nylén, O'Hara, & Engeldinger 2013; Stapleton et al. 2012)
- **Social support facilitates better parenting and promotes children's development** (Angleley et al. 2015; Bono, Sy, & Kopp 2016; Byrnes & Mill 2012)



8

Vulnerability to Social Poverty

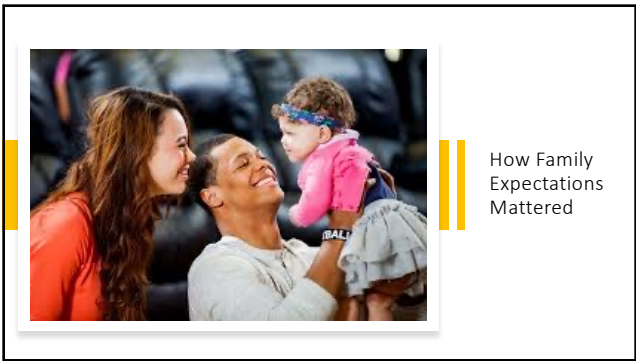
- **Age**
- **Multiple transitions**
 - Transition to adulthood
 - Transition to partnership
 - Transition to parenthood
- **Instability undermines trust in self and partner**



9



10



11



12

Social Poverty and Child Welfare

Social supports—individually and in one's neighborhood—are protective against risks to children

How might the stigma of child welfare system involvement limit the social resources parents have?

In the process of preparing for and supporting reunification, how can we help to build social resources for parents and children to increase odds of success and permanence?



Image from Survey Center on American Life

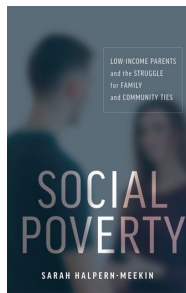
13

Addressing Social Poverty in Public Policy

Design programs to promote dignity and human connection

Deliver social services in a way that builds relationships

14



15
