

UPCOMING TRAININGS

mark your calendars!

Visit caltrin.org to view the full training calendar and self-paced online training options



- 11/04 | Art & Science of Father Engagement Programming
- 11/10 | The Data Playbook for Prevention Action Planning
- November Protective Factor of the Month Social & Emotional Competence of Children Webinar 11/08, Workshop 11/22
- 11/18 | Nurturing Parent & Child Development
- 11/09 | Historical and Racial Trauma
- 12/02 | The Culture of One: Moving Beyond Cultural Competence

4



Logic Model Development Support Workshop

Facilitators:
Samantha Florey, MA
Cynthia Smith, PhD
Edi Winkle, MSSW



RICHSID is not responsible for the creation of content and any views expressed in its materials and programming.

5



Speakers SPOTLIGHT




<p>SAMANTHA FLOREY, MA Training & Technical Assistance Coordinator</p>	<p>CYNTHIA SMITH, PHD Evaluation Specialist & Program Planning Coordinator</p>	<p>EDI WINKLE, MSSW Training & Technical Assistance Coordinator</p>
---	---	--

RICHSID is not responsible for the creation of content and any views expressed in its materials and programming.

6

Comprehensive Prevention Plan (CPP)

The theory of change or logic model which describes the activities and intended outcomes for children, youth, parents, caregivers, and families. The logic model helps to connect the goals of the cross-sector partnership to align with the intent of both the state and federal legislation.

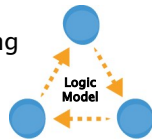


7



It's a template for ...


- ✦ Planning services
- ✦ Implementing services
- ✦ Evaluating services
- ✦ Reporting



8

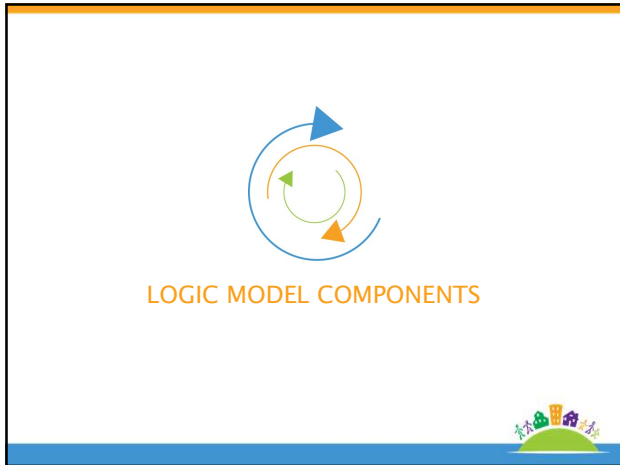
Think of it as a Drawing Board



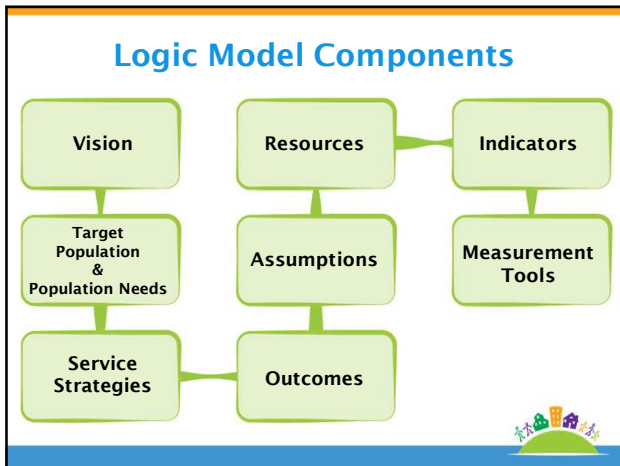
- ✓ Logic models should be developed in consultation with program stakeholders including direct service staff, management, and consumers.
- ✓ The logic model informs service selection, implementation, and evaluation. 
- ✓ Part of the CQI process involves 'going back to the drawing board'. Logic models are living documents that should be revisited and altered as needed.



9



10



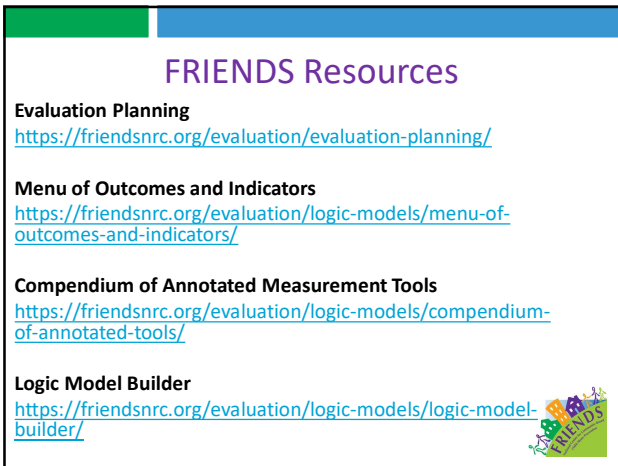
11



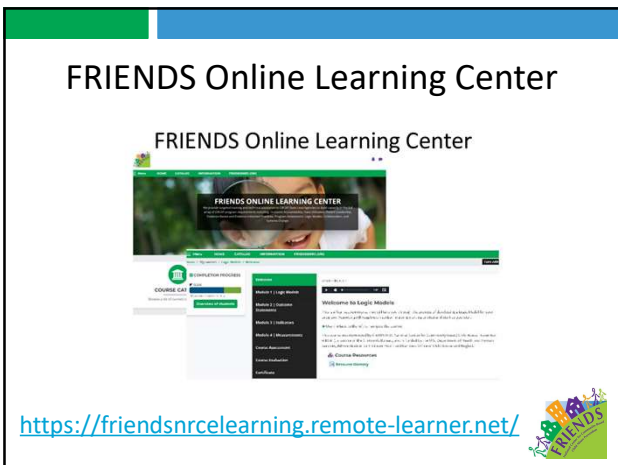
12



13



14



15



16

Contact Information

Samantha Florey
sflorey@friendsnrc.org
 773-857-0889

Cynthia Smith
csmith@friendsnrc.org
 812-483-1906

Edi Winkle
ewinkle@friendsnrc.org
 918-486-6687

FRIENDS is a service of the Children's Bureau
www.friendsnrc.org

17

Thanks for joining us!

WHAT'S NEXT?

- Survey and certificate in the chat now
- We'll send a follow-up email with training resources in the next 2 days
- Watch your inbox for the next issue of CalTrin Connect



STAY CONNECTED FOR MORE FREE TRAINING & RESOURCES!

 caltrin.org
  info@caltrin.org

 twitter.com/cal_trin
  facebook.com/caltrin
  linkedin.com/company/caltrin

18
