



Helping Parents Move Beyond Their Own ACEs

Presenter: Natalie Elms

RCHSD is not responsible for the creation of content and any views expressed in its materials and programming.



5



Speaker SPOTLIGHT




NATALIE ELMS
Manager, KIDSTART CENTER
Rady Children's Hospital-San Diego

- Clinical background in behavioral therapy
- Involved in grant-funded programs at RCHSD for more than 10 years
- Manager of RCHSD's KidSTART Center
- Passionate about finding creative ways to meet the clinical needs of young children with complex needs

RCHSD is not responsible for the creation of content and any views expressed in its materials and programming.


6



Helping Caregivers Move Beyond the Impact of Their Own ACEs

Natalie Elms
Rady Children's Hospital, KidSTART Center Program Manager


RCHSD is not responsible for the creation of content and any views expressed in its materials and programming.



7

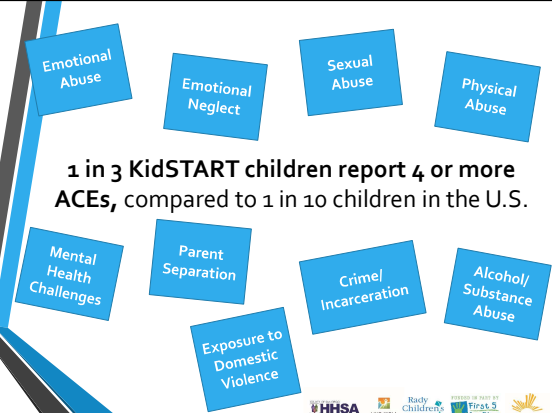

Objectives

- ❖ Explore data and trends from caregiver and child ACE screenings
- ❖ Discuss the impact of caregiver ACEs on the child's treatment outcomes through case studies
- ❖ Identify opportunities to screen/educate caregivers on the impact of ACEs to facilitate improved engagement and outcomes

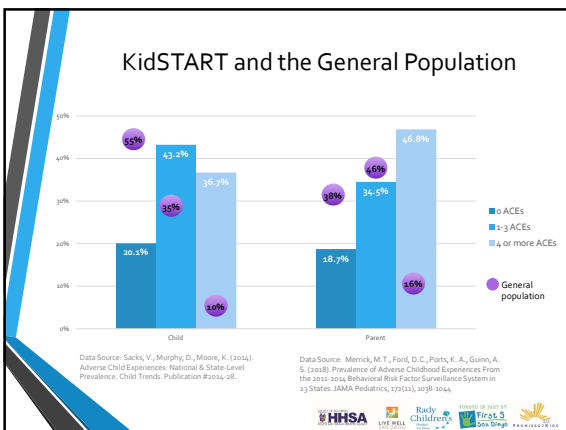


8

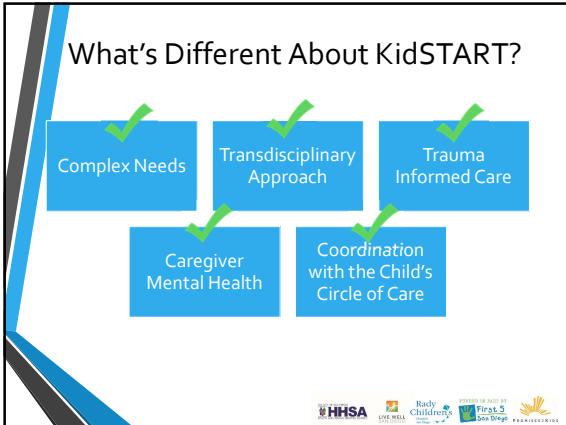
1 in 3 KidSTART children report 4 or more ACEs, compared to 1 in 10 children in the U.S.

9




10



11

- ### Trauma Informed Care
- Clinical Supervision with Psychologist & LCSW
 - Care Coordinators hold the trauma history of the family (Caregiver & Child) in coordinating care
 - Entire KidSTART team working through a trauma lens
 - Collaboration & coordination with KidSTART MH Team
 - Ongoing training on trauma-informed care both internally and externally
- HHSA | Love Well | Ready Children | SUPPORTED BY THE TEXAS STATE DEPARTMENT OF HEALTH

12

- ### Administration Factors Considered
- Staff training and experience to discuss sensitive information
 - Creation of a safe and supportive environment for caregivers and children
 - Value of understanding both child and caregiver experiences
 - Resources to support families after trauma history is identified
 - Opportunity to educate caregivers on the impact of adverse experiences on mental health in young children
- 
- HHSA | Love Well | Ready Children | SUPPORTED BY THE TEXAS STATE DEPARTMENT OF HEALTH

13

KidSTART First Stop.....

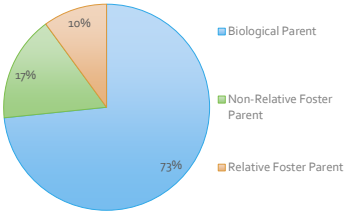
- Caregiver Mental Health
- Child's Development & Behavior
- Family Environment
- Circle of Care
- Review of Barriers

Home Based Assessment




14

Who is Completing the ACE Screening for KidSTART Children?




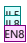
Category	Percentage
Biological Parent	73%
Non-Relative Foster Parent	17%
Relative Foster Parent	10%



15

How Do Caregiver ACES Impact Child Treatment Outcomes?

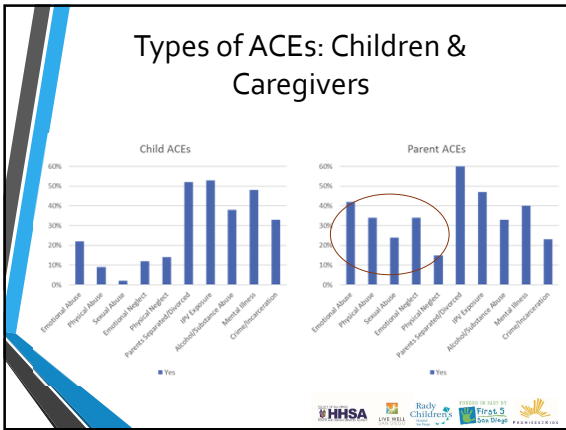
- What's "normal" to this caregiver?
- Mental Health Education
- Ongoing screening for depression & anxiety
- Caregivers want a better life for their children



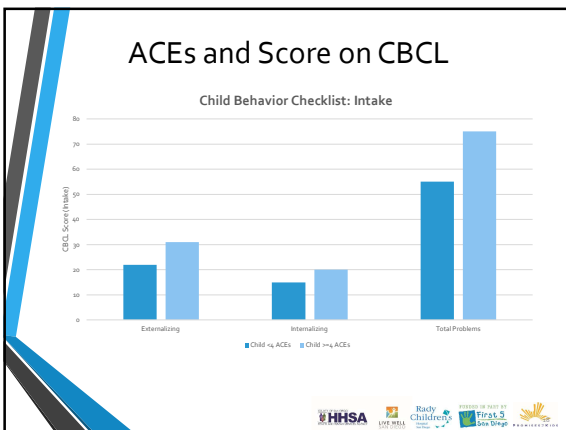
16

Slide 16

- JL5** Not sure that this question matches with all of the bullets.
Javier, Lenette, 8/26/2021
- JL8** Suggestion- how does caregiver ACES impact child treatment outcomes? This would align with objective #2
Javier, Lenette, 8/27/2021
- EN8** Updated.
Elms, Natalie, 8/27/2021



17



18

Treatment Considerations

- Trusting Relationship
- Role of Regulation
- Executive Functioning Skills
- Importance of modeling skills
- Skill Building

I feel like I'm not being judged at KidSTART!

These strategies would probably help me too!

Oh, I struggled with this as a child too!

19

Let's hear from you!

Go to www.menti.com and use the code 8526 1566

Go to
www.menti.com
Enter the code
8526 1566



Or use QR code



20

We'll zoom you into breakout groups to discuss...

- How are you holding the caregiver's experience in your program?
- Are there things you would do differently moving forward?

Share your group responses via Mentimeter!



21



Thank you! Questions?



22



What Happens Next?

- Survey and certificate in the chat now
- Recording and resources available within two days
- Find and register for your next professional development opportunity at www.caltrin.org
- Watch your inbox for the next issue of *CalTrin Connect*

Stay connected for more free training & resources

www.caltrin.org [Facebook.com/caltrin](https://www.facebook.com/caltrin)
info@caltrin.org [Twitter.com/cal_trin](https://twitter.com/cal_trin)
[linkedin.com/company/caltrin](https://www.linkedin.com/company/caltrin)