



Helping Parents Move Beyond Their Own ACEs

Presenter: Natalie Elms

RGHSD is not responsible for the creation of content and any views expressed in its materials and programming.





Speaker SPOTLIGHT

NATALIE ELMS
Manager, KIDSTART CENTER
Rady Children's Hospital-San Diego

- Clinical background in behavioral therapy
- Involved in grant-funded programs at RCHSD for more than 10 years
- Manager of RCHSD's KidSTART Center
- Passionate about finding creative ways to meet the clinical needs of young children with complex needs

RCHSD is not responsible for the creation of content and any views expressed in its materials and programming.



Helping Caregivers Move Beyond the Impact of Their Own ACEs

Natalie Elms

Rady Children's Hospital, KidSTART Center Program Manager





Objectives

- ❖ Explore data and trends from caregiver and child ACE screenings
- ❖ Discuss the impact of caregiver ACEs on the child's treatment outcomes through case studies
- ❖ Identify opportunities to screen/educate caregivers on the impact of ACEs to facilitate improved engagement and outcomes

Emotional Abuse

Emotional Neglect

Sexual Abuse

Physical Abuse

1 in 3 KidSTART children report 4 or more ACEs, compared to 1 in 10 children in the U.S.

Mental Health Challenges

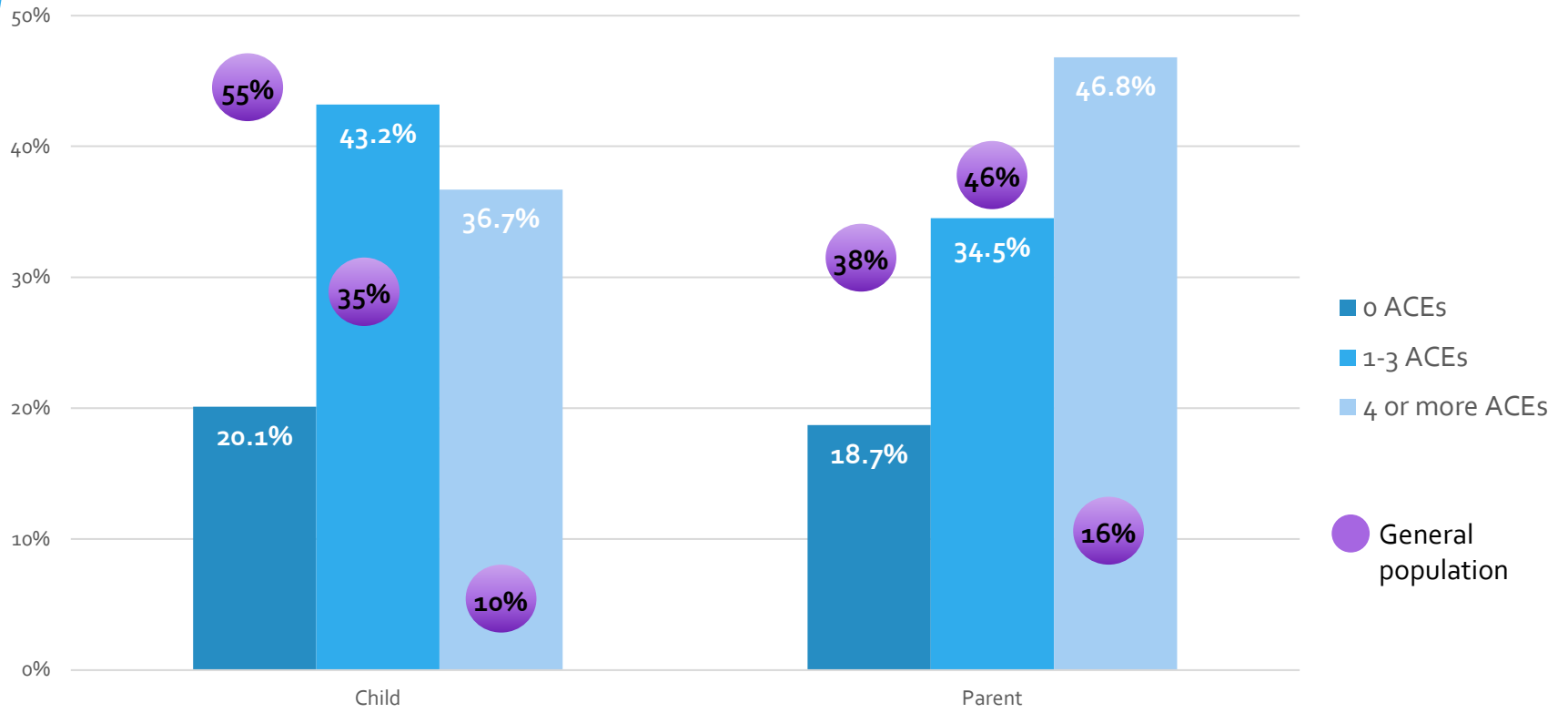
Parent Separation

Crime/ Incarceration

Alcohol/ Substance Abuse

Exposure to Domestic Violence

KidSTART and the General Population



Data Source: Sacks, V., Murphy, D., Moore, K. (2014). Adverse Child Experiences: National & State-Level Prevalence. Child Trends. Publication #2014-28.

Data Source: Merrick, M.T., Ford, D.C., Ports, K. A., Guinn, A. S. (2018). Prevalence of Adverse Childhood Experiences From the 2011-2014 Behavioral Risk Factor Surveillance System in 23 States. JAMA Pediatrics, 172(11), 1038-1044

What's Different About KidSTART?



Complex Needs




Transdisciplinary Approach



Trauma Informed Care



Caregiver Mental Health



Coordination with the Child's Circle of Care



Trauma Informed Care

- Clinical Supervision with Psychologist & LCSW
- Care Coordinators hold the trauma history of the family (Caregiver & Child) in coordinating care
- Entire KidSTART team working through a trauma lens
- Collaboration & coordination with KidSTART MH Team
- Ongoing training on trauma-informed care both internally and externally

Administration Factors Considered

- Staff training and experience to discuss sensitive information
- Creation of a safe and supportive environment for caregivers and children
- Value of understanding both child and caregiver experiences
- Resources to support families after trauma history is identified
- Opportunity to educate caregivers on the impact of adverse experiences on mental health in young children



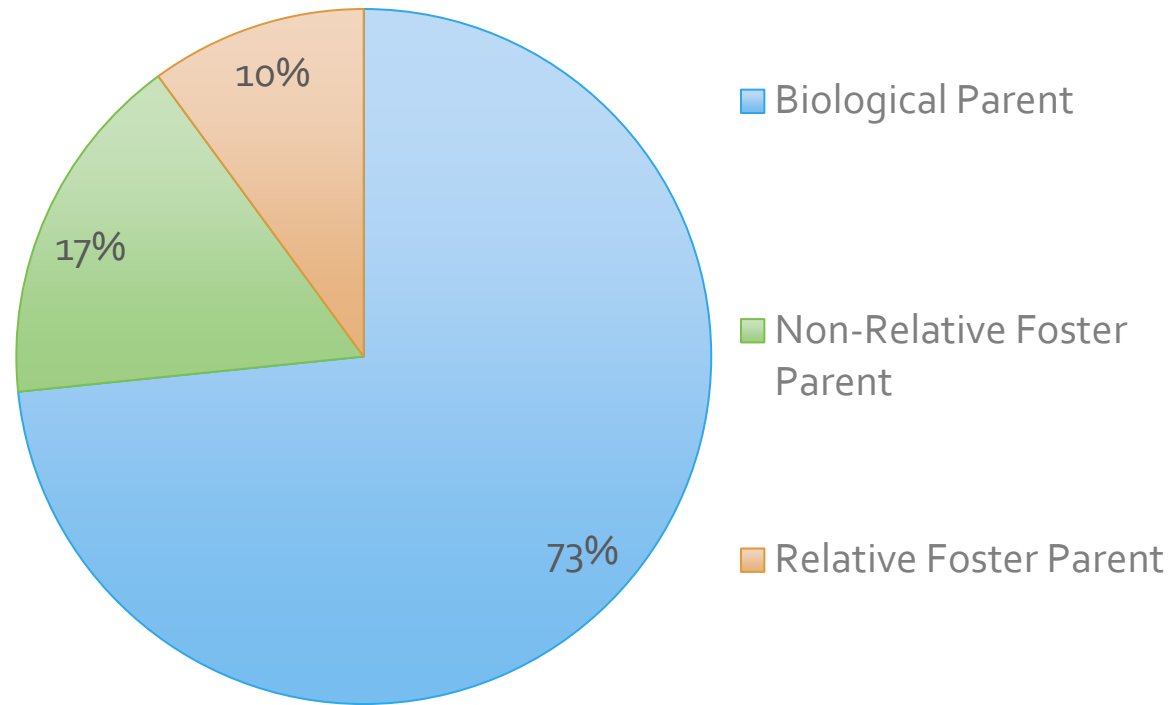
KidSTART First Stop.....

Home
Based
Assessment

- Caregiver Mental Health
- Child's Development & Behavior
- Family Environment
- Circle of Care
- Review of Barriers



Who is Completing the ACE Screening for KidSTART Children?



How Do Caregiver ACES Impact Child Treatment Outcomes?

115
118
EN8

- What's "normal" to this caregiver?
- Mental Health Education
- Ongoing screening for depression & anxiety
- Caregivers want a better life for their children

Slide 16

JL5

Not sure that this question matches with all of the bullets.

Javier, Lenette, 8/26/2021

JL8

Suggestion- how does caregiver ACES impact child treatment outcomes? This would align with objective #2

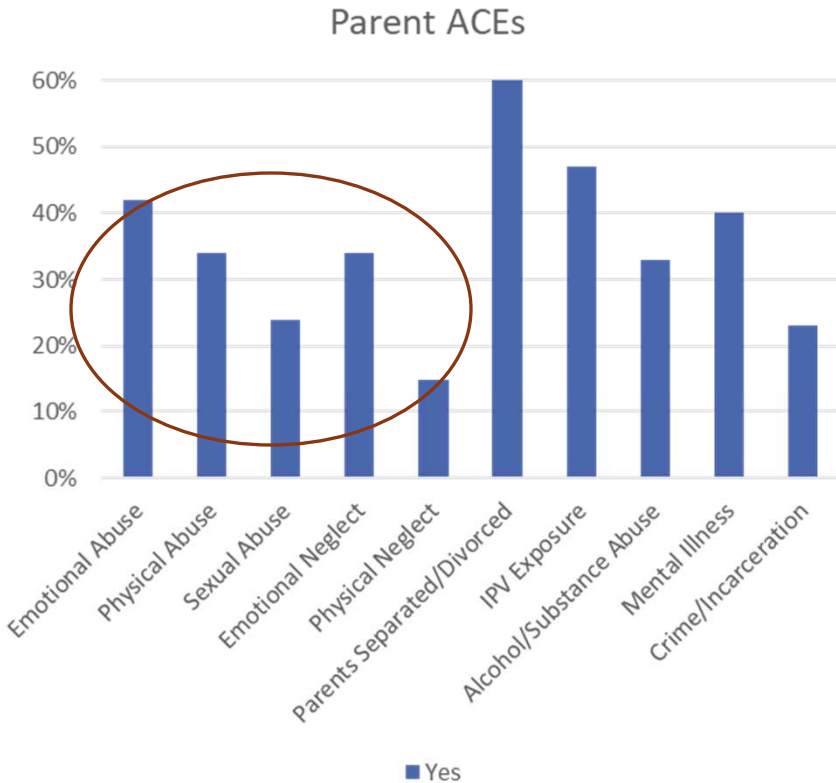
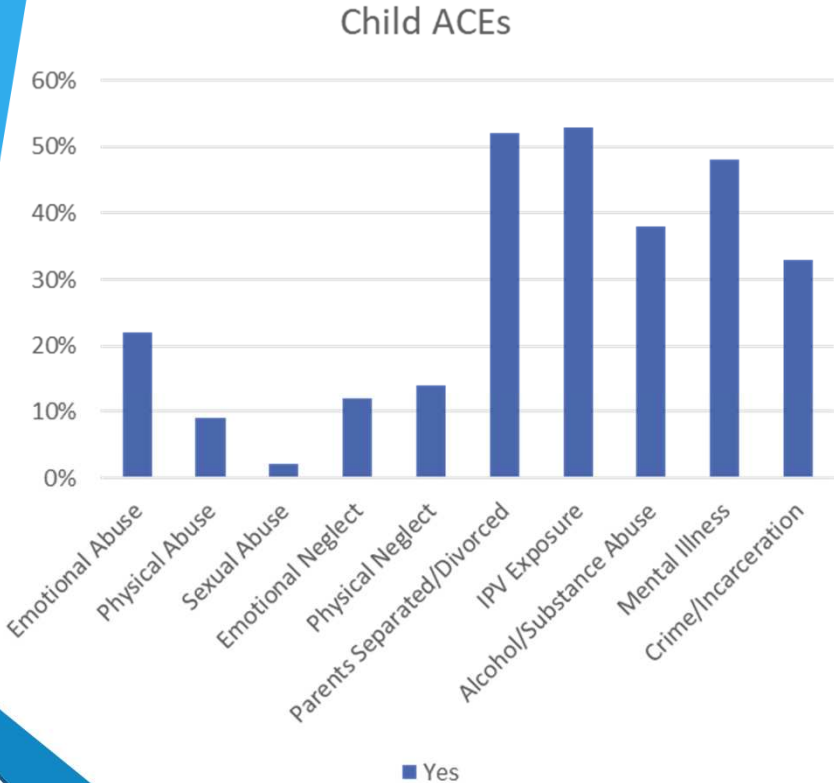
Javier, Lenette, 8/27/2021

EN8

Updated.

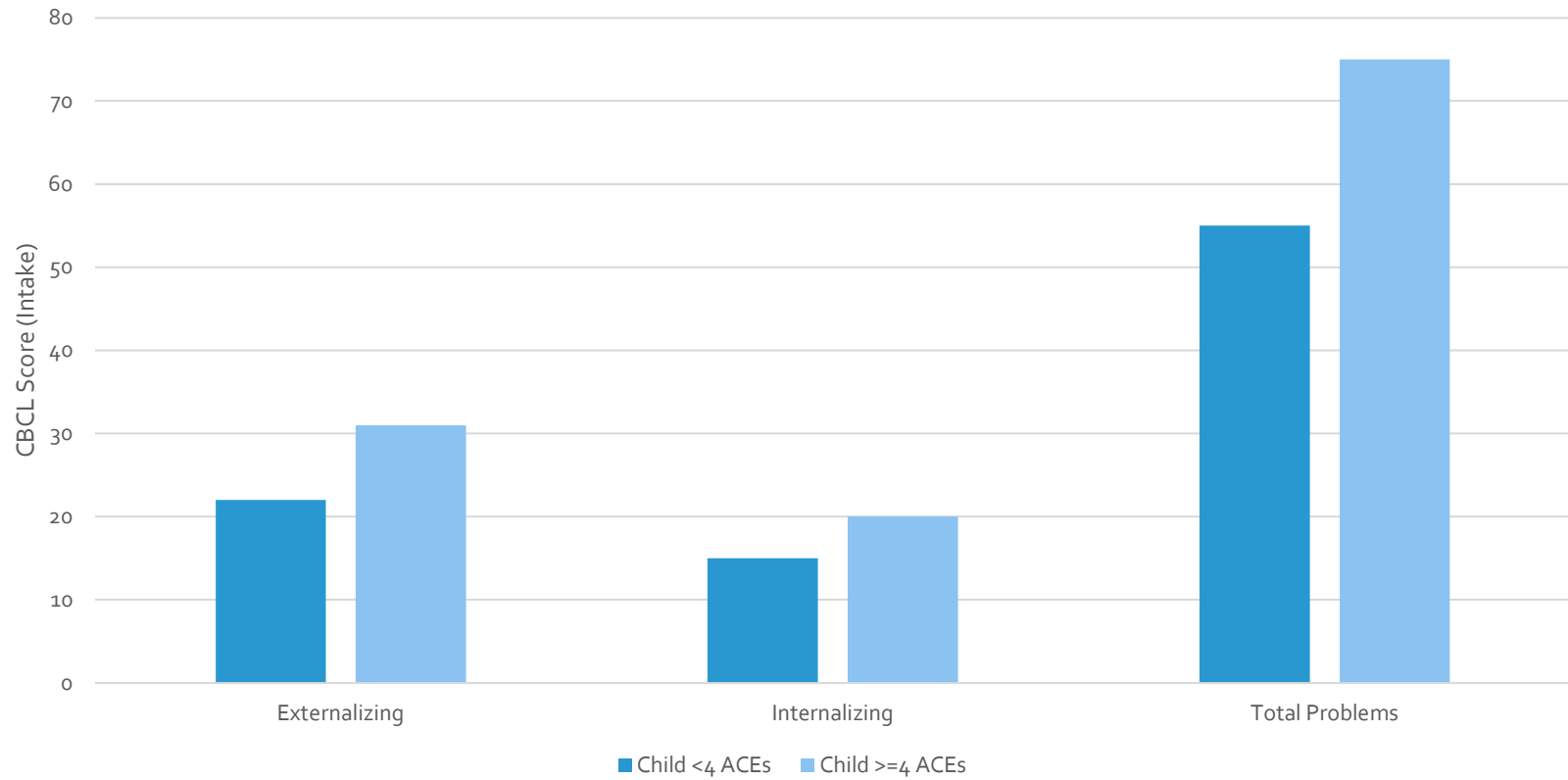
Elms, Natalie, 8/27/2021

Types of ACEs: Children & Caregivers



ACEs and Score on CBCL

Child Behavior Checklist: Intake



Treatment Considerations

- Trusting Relationship
- Role of Regulation
- Executive Functioning Skills
- Importance of modeling skills
- Skill Building

These strategies would probably help me too!

I feel like I'm not being judged at KidSTART!

Oh, I struggled with this as a child too!

Let's hear from you!

Go to www.menti.com and use the code 8526 1566



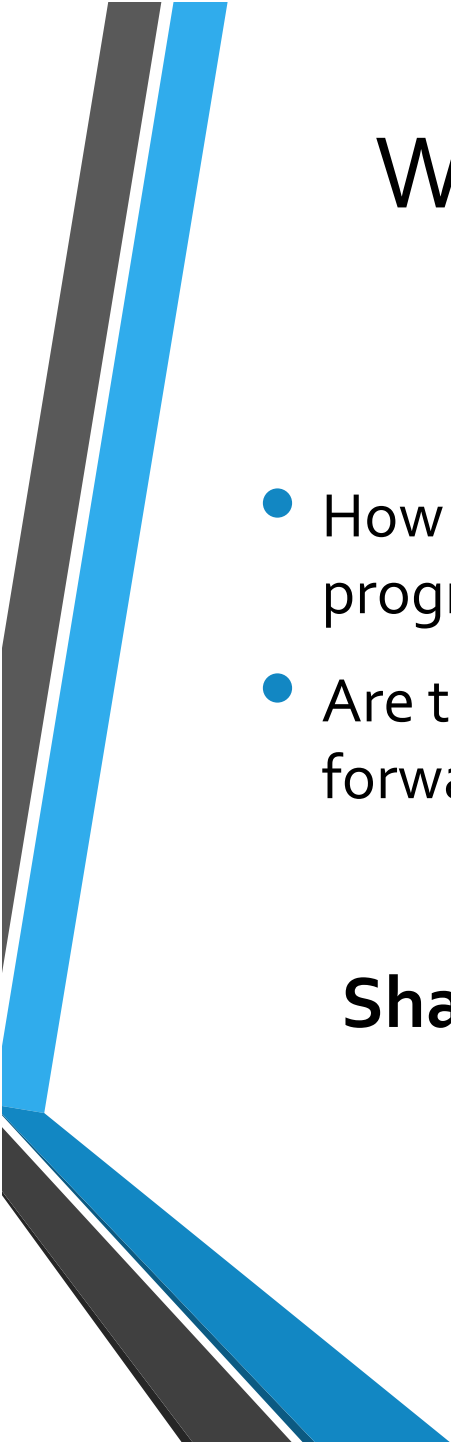
Go to
www.menti.com

Enter the code
8526 1566



Or use QR code





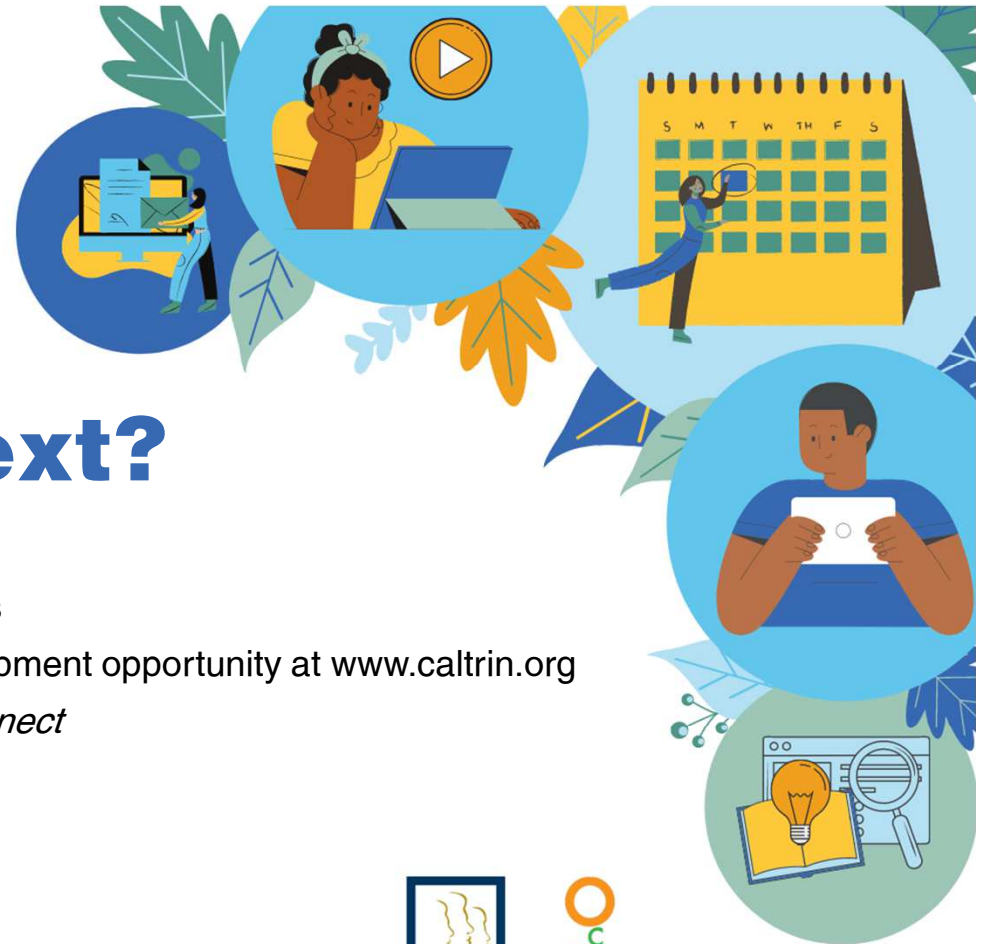
We'll zoom you into breakout groups to discuss...

- How are you holding the caregiver's experience in your program?
- Are there things you would do differently moving forward?

Share your group responses via Mentimeter!



Thank you! Questions?



What Happens Next?

- Survey and certificate in the chat now
- Recording and resources available within two days
- Find and register for your next professional development opportunity at www.caltrin.org
- Watch your inbox for the next issue of *CalTrin Connect*

Stay connected for more free training & resources



www.caltrin.org



[Facebook.com/caltrin](https://www.facebook.com/caltrin)



info@caltrin.org



[Twitter.com/cal_trin](https://twitter.com/cal_trin)



[linkedin.com/company/caltrin](https://www.linkedin.com/company/caltrin)

