

Welcome!

THE WEBINAR WILL BEGIN SHORTLY

While you're waiting...



ICEBREAKER QUESTION

What would your superpower be and why?

Please enter your answer in the Chat.



RECORDING & RESOURCES

Available in 48 hours;
links will be sent to your registration email.



SURVEY & CERTIFICATE OF COMPLETION

Available following the webinar.



CONNECT WITH



www.caltrin.org



[Facebook.com/caltrin](https://www.facebook.com/caltrin)



[Twitter.com/cal_trin](https://twitter.com/cal_trin)

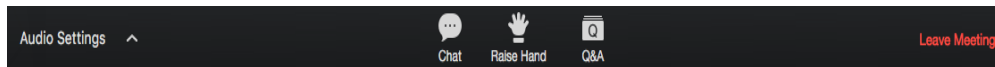


[linkedin.com/company/caltrin](https://www.linkedin.com/company/caltrin)

Raffle winners announced on social media tomorrow

Quick Notes

- This presentation is being recorded.
- A brief survey will be available after the webinar.
- Most controls are located on the tool bar at the bottom of your screen:



Test and change your audio connection



Enter questions for the presenters and read their responses

- When using the Chat feature, please reply to the panelists as well as the attendees; *when appropriate and within comfort level.*

All panelists

All panelists and attendees





Attn: Note Takers

- Access the presentation slides now! Download link is available in the Chat.
- A follow-up email will be sent to all participants within 48 hours of the webinar. This message includes:
 - Webinar Recording
 - PowerPoint Slides
 - Handouts & Resources



Child Abuse Prevention: State of the Science

Presenters:

Jennifer Rolls Reutz, MPH, Director, California Evidence-Based Clearinghouse

Dana Jarzynka, MA, Training Coordinator, CalTrin

Jess Mattly, MBA, Training Coordinator, CalTrin

RGHSD is not responsible for the creation of content and any views expressed in its materials and programming.



Hi, We're CalTrin

Who We Are:

- The California Training Institute (CalTrin)
- Funded by the State of California, Dept. of Social Services, Office of Child Abuse Prevention (OCAP)
- Comprehensive, science-based professional education program



This [training, webinar, publication, etc.] was made possible with funding from the California Department of Social Services, Office of Child Abuse Prevention. Any opinions, findings, conclusions and or recommendations expressed are those of the [Grantee name] and do not necessarily reflect the views of the California Department of Social Services.

Meet your CalTrin Trainers



Dana Jarzynka, MA

Training Coordinator
djarzynka@rchsd.org



Jessica Mattly, MBA

Training Coordinator
jmattly@rchsd.org

CALIFORNIA *Regions Map*





The California Training Institute (CalTrin)

Who We Serve:

- California staff, leadership, and stakeholders of:
 - Family Resource Centers (FRCs)
 - Child Abuse Prevention Councils (CAPCs)
 - Child Welfare Agencies

What We Offer:

- Live Webinars
- Virtual Self-Paced Courses
- Job Aids & Other Resources

Four Content Pillars



**EVIDENCE-BASED/
EVIDENCE-INFORMED
SERVICE
DELIVERY**



**DIRECT
SERVICE
DELIVERY
SKILLS**



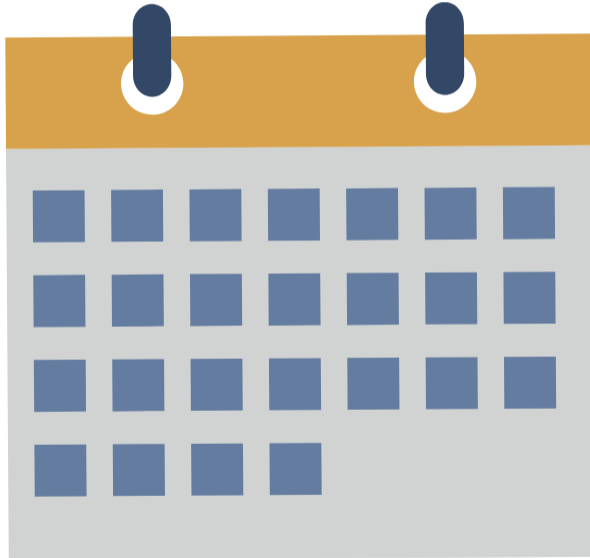
**TRAUMA-
INFORMED
SYSTEMS**



**MANAGEMENT &
LEADERSHIP
DEVELOPMENT**

Upcoming Training Topics

Mark your calendars!



APRIL



04/15 *Trauma-Informed Organizations*



04/28 *The Hidden Biases of Good People*

May



05/06 - 06/24 *Protective Factors 101*



05/12 *Implicit Bias Mitigation*



05/18-19 *How are the Children?:
Understanding Poverty - Breaking
the Iron Cage*

Visit caltrin.org to view the full training calendar.

Why is Preventing Child Abuse a Priority?



Poll Question

- How many **children** received either an investigation or alternative response in FY2019?
 - 4.4 million
 - 3.5 million
 - 2.3 million
 - 1.8 million



Child Abuse Prevention Month

- 1983 - April recognized as Child Abuse Prevention (CAP) Month.
- Recognizes the importance of **communities working together** to help families thrive and prevent child maltreatment.
- Communities are encouraged to increase **awareness** about child and family well-being and work together to **implement** effective strategies that support families and prevent child abuse and neglect.

2016 Presidential Proclamation

“During National Child Abuse Prevention Month, we recommit to giving



every child a chance to succeed and to ensuring that every child grows up in a safe, stable, and nurturing environment that is free from abuse and neglect.”

—President Barack Obama





CALTRIN
California Training Institute

Speaker SPOTLIGHT



Jennifer Rolls Reutz, MPH
Evidence-Based Practices
Rady Children's Hospital-San Diego



@JRollsReutz

The California Evidence-Based Clearinghouse for Child Welfare

cebc4cw.org



CEBC Mission

To advance the effective implementation of evidence-based practices for children and families involved with the child welfare system



```
graph TD; A[CEBC Mission] --> B[Program Registry]; A --> C[Selecting & Implementing Programs];
```

Program
Registry

Selecting &
Implementing
Programs





THE CALIFORNIA EVIDENCE-BASED
CLEARINGHOUSE

FOR CHILD WELFARE

Information and Resources for Child Welfare Professionals



Home



Program Registry



Implementation



Find Programs

About Us

Resources

What's New

Contact the CEBC

Email Alerts

Welcome to the CEBC:

California Evidence-Based Clearinghouse for Child Welfare

The mission of the California Evidence-Based Clearinghouse for Child Welfare (CEBC) is to advance the effective implementation of evidence-based practices for children and families involved with the child welfare system.

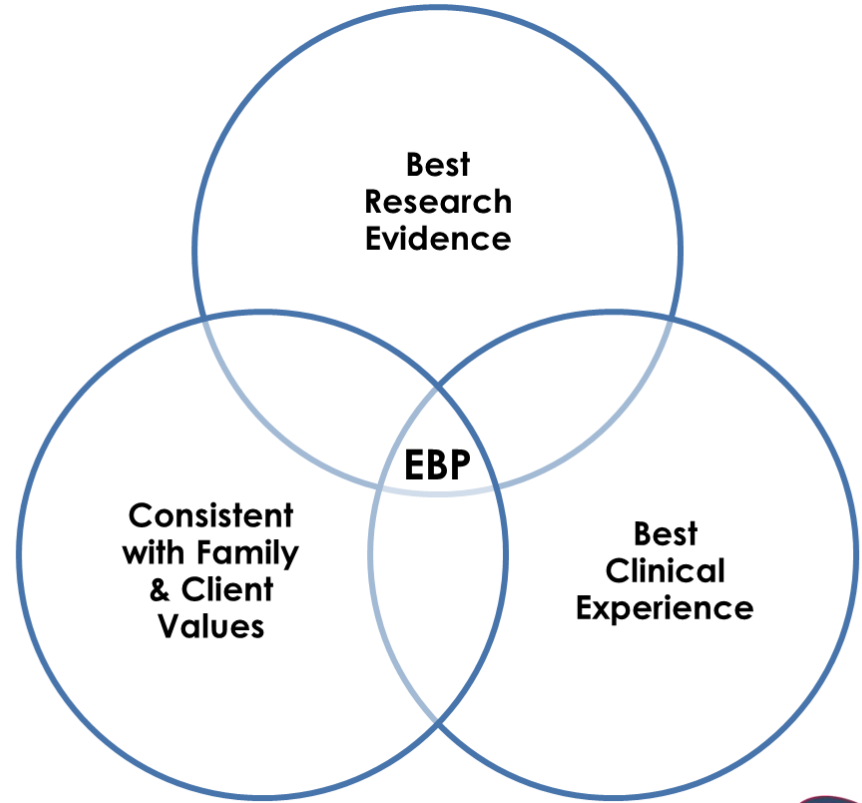


View Programs



Select and Implement Programs

CEBC's Definition of Evidence- Based Practice (EBP) for Child Welfare

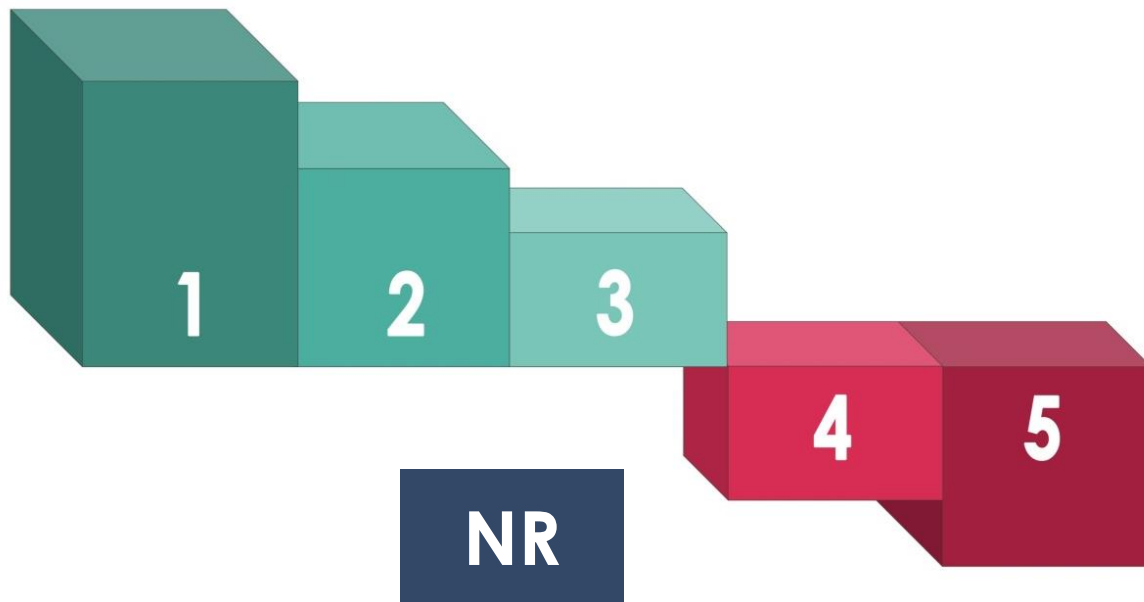


[Based on Institute of Medicine, 2001]



CEBC Scientific Rating Scale

WELL-SUPPORTED ← → CONCERNING



Child Welfare System Relevance Level

HIGH

Designed or commonly used for **child welfare clients**.

MED.

Designed or is commonly used for populations **similar to child welfare clients**.

LOW

Designed for populations **with little apparent similarity** to the child welfare services population.



CEBC Review Process

1



IDENTIFY
TOPIC AREAS

2



NARROW DOWN
A PROGRAM
LIST

3



WORK WITH
PROGRAM REP.
TO GATHER INFO.

4



REVIEW
RESEARCH ON
EACH PROGRAM

5



RATE PROGRAM
(IF APPLICABLE)

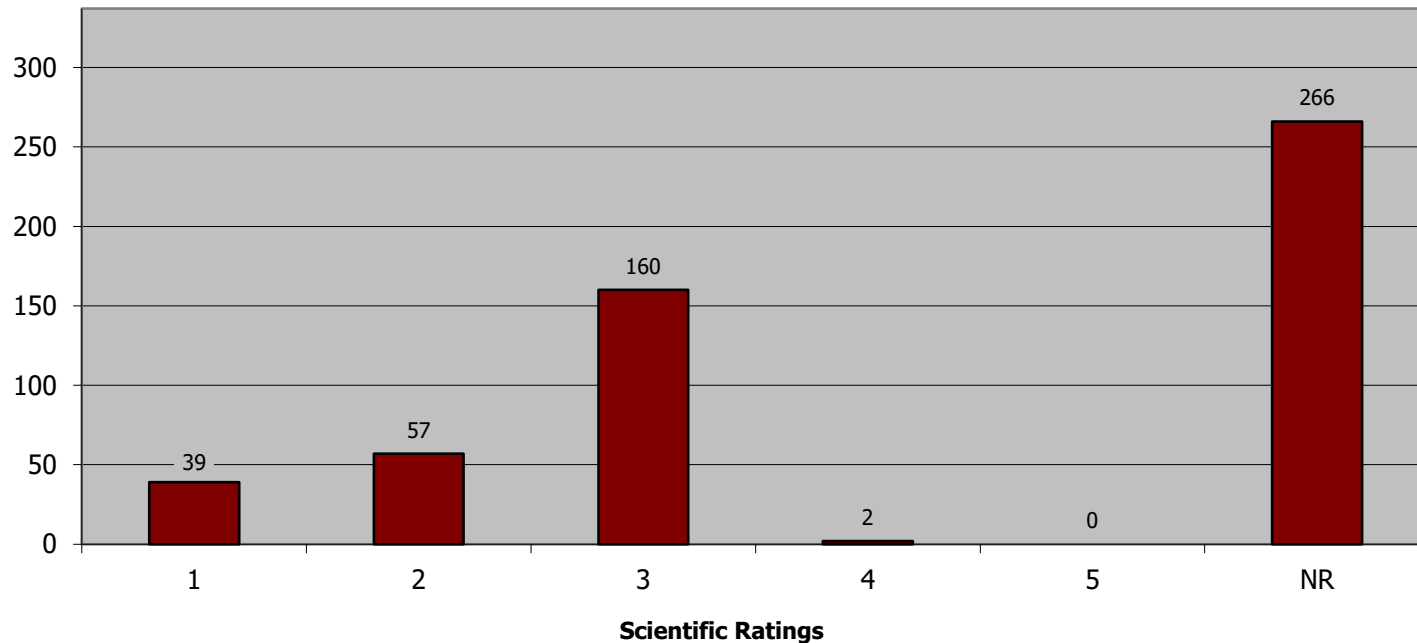
6



POST PROGRAM
INFORMATION



Number of Programs by Scientific Rating



What does the Science tell us about how Best to Prevent Child Abuse and Neglect (CAN)?



Main Types of Abuse

- Physical Abuse
- Sexual Abuse
- Emotional Abuse
- Neglect



Primary Prevention

- Programs directed at the **general population** which are designed to prevent abuse and neglect from occurring for the first time in a family.
- Universal prevention programs.
- Strengthen communities and improve child well-being by focusing on the social determinants of health



Secondary Prevention

- Programs **targeted** at individuals or families which are at a **high risk for maltreatment** with a goal of preventing abuse or neglect from occurring.
- Programs seek to build protective factors and mitigate the risk factors.



Strategies to Prevent CAN

1. Strengthen economic supports to families
2. Change social norms to support parents and positive parenting
3. Provide quality care and education early in life
4. Enhance parenting skills to promote healthy child development
5. Intervene to lessen harms and prevent future risk



Child Abuse Prevention: State of the Science

Strategy and Implementation Worksheet



Strategies and Approaches	Approach/Ideas	What is one approach/idea I can implement as an individual contributor?	What is one approach/idea our organization can implement?
Strengthen economic supports to families	<ul style="list-style-type: none"> - Strengthening household financial security - Family-friendly work policies 		
Change social norms to support parents and positive parenting	<ul style="list-style-type: none"> - Public engagement and education campaigns - Legislative approaches to reduce corporal punishment 		
Provide quality care and education early in life	<ul style="list-style-type: none"> - Preschool enrichment with family engagement - Improved quality of child care through licensing and accreditation 		
Enhance parenting skills to promote healthy child development	<ul style="list-style-type: none"> - Early childhood home visitation - Parenting skill and family relationship approaches 		
Intervene to lessen harms and prevent future risk	<ul style="list-style-type: none"> - Enhanced primary care - Behavioral parent training programs - Treatment to lessen harms of abuse and neglect exposure - Treatment to prevent problem behavior and later involvement in violence 		

1. Strengthen economic supports to families

A. Strengthening household financial security

B. Family-friendly work policies



1A. Strengthening household financial security

- Tax credits
 - CalEITC www.CalEITC4Me.org
 - Federal EITC
 - Child Tax Credit



- CalFresh / SNAP / nutrition assistance programs



1A. Strengthening household financial security

- Assisted housing mobility
 - Locate Section 8 housing in low or lower poverty neighborhoods
- Subsidized childcare
 - CalWORKs Child Care, Vouchers, etc.



1A. Strengthening household financial security

- Child support payments
 - Impact on CalWORKs / TANF payment



1A. Strengthening household financial security - ACTIONS

- Educate about available options and how to access them:
 - Flyers
 - Webinars
 - Hands-on support with forms, etc.
- Encourage federal, state and local lawmakers to support and expand these efforts



1B. Family-friendly work policies

- Livable wages
- Paid leave
 - Sick leave, parental leave, and vacation
- Flexible and consistent schedules



1B. Family-friendly work policies - ACTIONS

- Offer all of these at your agency
 - Ensure all contractors offer these
- Encourage lawmakers to support and expand these efforts
- Publicly recognize local employers who implement these policies



Child Abuse Prevention: State of the Science

Strategy and Implementation Worksheet



Strategies and Approaches	Approach/Ideas	What is one approach/idea I can implement as an individual contributor?	What is one approach/idea our organization can implement?
Strengthen economic supports to families	<ul style="list-style-type: none"> - Strengthening household financial security - Family-friendly work policies 		
Change social norms to support parents and positive parenting	<ul style="list-style-type: none"> - Public engagement and education campaigns - Legislative approaches to reduce corporal punishment 		
Provide quality care and education early in life	<ul style="list-style-type: none"> - Preschool enrichment with family engagement - Improved quality of child care through licensing and accreditation 		
Enhance parenting skills to promote healthy child development	<ul style="list-style-type: none"> - Early childhood home visitation - Parenting skill and family relationship approaches 		
Intervene to lessen harms and prevent future risk	<ul style="list-style-type: none"> - Enhanced primary care - Behavioral parent training programs - Treatment to lessen harms of abuse and neglect exposure - Treatment to prevent problem behavior and later involvement in violence 		

2. Change social norms to support parents and positive parenting

- A. Public engagement and education campaigns
- B. Legislative approaches to reduce corporal punishment



2A. Public engagement and education campaigns

- Social Marketing
- Mass / Social media campaigns
- Town Hall meetings
- Bystander approaches





Children Cannot Protect Themselves From Abuse



A child abuse awareness and prevention campaign created by ChildSafe



Sole Sponsor since 2015



cebc4cw.org

2A. Public engagement and education campaigns - ACTIONS

- Media and marketing campaigns during CAP Month and beyond
- Adopt a community-level intervention
 - Examples on CEBC:
 - Triple P – Positive Parenting Program
 - Strong Communities for Children



2B. Legislative approaches to reduce corporal punishment

- Prohibit corporal punishment in day cares, schools, after school care, foster care, juvenile facilities, etc.
 - Pair with engagement and education campaign



2B. Legislative approaches to reduce corporal punishment - ACTIONS

- Learn about your state's laws regarding corporal punishment
- Campaign to change law – media, social media, letter writing, etc.
 - Part of CAP Month and ongoing effort



3. Provide quality care and education early in life

- A. Preschool enrichment with family engagement
- B. Improved quality of childcare through licensing and accreditation



3A. Preschool enrichment with family engagement

- Typically focus on economically disadvantaged children (e.g. Title 1 school area, federal poverty level)
- Provide support and educational opportunities for parents



3A. Preschool enrichment with family engagement - ACTIONS

- Examine the options available in your area
- Encourage privately funded preschools to deliver similar parent support services
- Example on CEBC:
 - Early Head Start



3B. Improved quality of childcare through licensing and accreditation

- National Association for the Education of Young Children program standards

<https://www.naeyc.org/our-work/families/10-naeyc-program-standards>



3B. Improved childcare quality thru licensing / accreditation - ACTIONS

- Learn about state and local childcare licensing requirements
- Determine which providers in your area are accredited and recognize them
 - Encourage local providers to get accredited



3B. Improved childcare quality thru licensing / accreditation - ACTIONS

- Increase educational opportunities for childcare providers
 - Include childcare providers in your education offerings
 - Partner with community colleges, local orgs
 - Develop resource list of free online options



4. Enhance parenting skills to promote healthy child development

A. Early childhood home visitation

B. Parenting skill and family relationship approaches



4A. Early childhood home visitation

- Basic parenting skills and child development
- All first-time moms, all at-risk moms, all in geographic area, etc.
- Nurses, professionals, paraprofessionals



4A. Early childhood home visitation - ACTIONS

- Determine what home visiting options are available in your area
 - Model used, eligibility, capacity, referral process, etc.
 - Visit the Home Visiting Evidence of Effectiveness Review (HomVEE) <https://homvee.acf.hhs.gov/>
- CEBC Examples:
 - Nurse-Family Partnership, SafeCare, Child First, Exchange Parent Aide



4B. Parenting skill and family relationship approaches

- Teach behavior management and positive parenting skills
- Support parents and caregivers
- Target all parents or focus on parents of children in specific age range



4B. Parenting skill and family relationship approaches - ACTIONS

- Ensure that local parenting education programs are evidence-based
 - Not one size fits all!
- CEBC Examples:
 - ACT Raising Safe Kids, Effective Black Parenting Program, Incredible Years



5. Intervene to lessen harms and prevent future risk

- A. Enhanced primary care
- B. Behavioral parent training programs
- C. Treatment to lessen harms of abuse and neglect exposure
- D. Treatment to prevent problem behavior and later involvement in violence



5A. Enhanced primary care

- Train local health providers on how to identify and address risk factors during routine visits
- Need clear referral pathways and follow-up



5A. Enhanced primary care - ACTIONS

- Periodic outreach to local providers
 - Train new staff and clinicians
 - Give handouts, resource guides, etc.
- CEBC Examples:
 - Family Check-Up (FCU)
 - Safe Environment for Every Kid (SEEK)



5B. Behavioral parent training programs

- Target:
 - Parents who are at high risk for abuse / neglect
 - Families where abuse/neglect has already occurred



5B. Behavioral parent training programs

- Teach parents specific skills to build a safe, stable, nurturing relationship with their children
 - Relationship enhancement skills
 - Behavior management and discipline skills



5B. Behavioral parent training programs - ACTIONS

- Ensure that local behavioral parent training programs are evidence-based
 - Typically different program from universal parent education
- Examine availability, capacity, location, cost, etc.



5B. Behavioral parent training programs

- CEBC Examples:
 - Alternatives for Families: A Cognitive-Behavioral Therapy (AF-CBT)
 - Combined Parent-Child Cognitive-Behavioral Therapy (CPC-CBT)
 - Parent-Child Interaction Therapy (PCIT)



5C. Treatment to lessen harms of abuse and neglect exposure

- Target children who have experienced abuse/neglect
- Therapeutic treatment
 - Posttraumatic stress disorder (PTSD), anxiety, depression



5C. Treatment to lessen harms of abuse and neglect exposure

- CEBC Examples:
 - Childhaven Childhood Trauma Treatment
 - Child-Parent Psychotherapy (CPP)
 - Prolonged Exposure Therapy for Adolescents (PE-A)
 - Trauma-Focused Cognitive-Behavioral Therapy (TF-CBT)



5C. Treatment to lessen harms of abuse and neglect exposure - ACTIONS

- Ensure that mental health needs of youth are considered, not just physical safety
- Ask what evidence-based practices are being used with children who have been abused
- Ensure that local clinicians are trauma-informed
- Learn about the ways that trauma can impact child behavior



5D. Treatment to prevent problem behavior and later involvement in violence

- Target children who have experienced abuse/neglect
- Therapeutic treatment
 - Behavioral focus



5D. Treatment to prevent problem behavior and later involvement in violence

- CEBC Examples:
 - Children with Problematic Sexual Behavior
Cognitive-Behavioral Treatment Program: School-age Program
 - Multisystemic Therapy (MST)
 - Treatment Foster Care Oregon (TFCO)



5D. Treatment to prevent problem behavior...- ACTIONS

- Ensure that local treatment programs are evidence-based and trauma informed
- Examine availability, capacity, location, cost, etc.



Which Program is the Best Fit for my Agency?



Program Descriptions Include:

- Scientific Rating & Child Welfare System Relevance Level
- Brief Description, Target Population, & Program Goals
- Delivery Method, Intensity, & Duration
- Manual & Training Availability
- Languages Available
- Resources & Requirements Needed to Run the Program
- Published Peer-Reviewed Research
- Contact Information





THE CALIFORNIA EVIDENCE-BASED
CLEARINGHOUSE

FOR CHILD WELFARE

Information and Resources for Child Welfare Professionals



Home



Program Registry



Implementation



Find Programs

Implementation-Specific Tools & Resources

Implementation Guide

Implementation Examples

[Home](#) <

Selecting & Implementing Programs

The goal of the CEBC Selecting & Implementing Programs section is to provide guidance and resources about the implementation of Evidence-Based Practices (EBPs).



Tools & Resources



Guide to Selecting &
Implementing EBPs



Implementation
Examples





Selecting & Implementing Evidence-Based Practices:

A Guide for Child & Family Serving Systems

Cambrria Walsh, Jennifer Rolls Reutz, Rhonda Williams

April 2015

Selection & Implementation Guide



The Power of Connection for CAN Prevention



It Takes a Village...

- We all need to work together to prevent child abuse – no one individual, organization or agency can do it alone.
- CAP Month is a great time to galvanize support for **year-round** efforts



Community Effort

- Many of the strategies and approaches discussed today require a community effort:
 - Multi-agency initiatives and collaboration
 - Shared funding streams
 - Legislative involvement
 - Social marketing and media campaigns



Synergy

- Produce a combined effect greater than the sum of their separate effects.
- Connection & Collaboration



Connection Actions

- Attend your local Child Abuse Prevention Councils (CAPC) meetings
- <https://www.cdss.ca.gov/inforesources/ocap/parent-resources/capc-map>



Connection Actions

- Get involved with or establish a Family Support & Strengthening Network for your county or region
 - 2+ Family Resource Centers that work together to ensure coordinated quality support for families.
- California Family Resource Association (CFRA)
 - <https://californiafamilyresource.org/>



Connection Actions

- Review the California Child Wellbeing Coalition e-Guide
 - County-level organizational resources
 - <https://www.cdss.ca.gov/Portals/9/OCAP/California%20Child%20Wellbeing%20Coalition%20e-Guide.pdf>

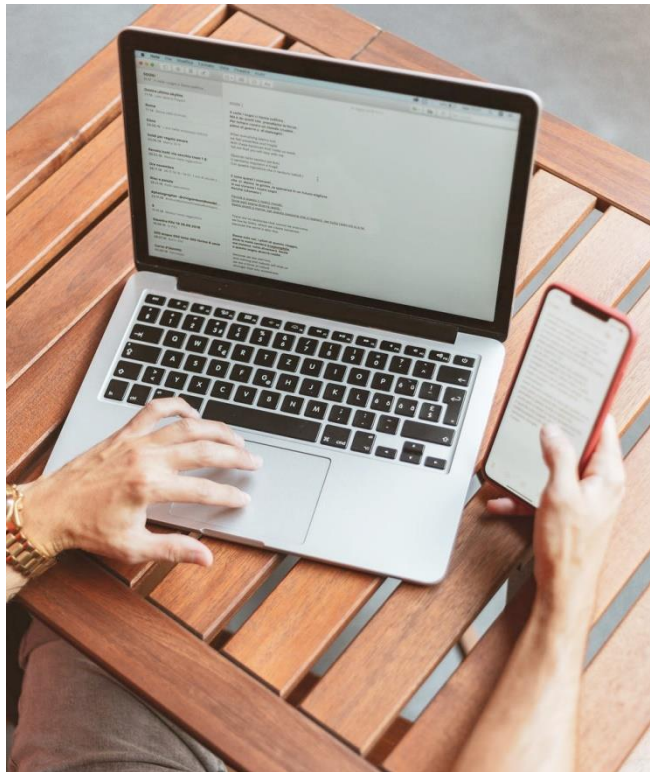


References

- U.S. Department of Health & Human Services, Administration for Children and Families, Administration on Children, Youth and Families, Children's Bureau. (2021). Child Maltreatment 2019. Available from <https://www.acf.hhs.gov/cb/research-data-technology/statistics-research/child-maltreatment>
- CDC Prevention Technical Package (<https://www.cdc.gov/violenceprevention/pdf/can-prevention-technical-package.pdf>)
- CDC Preventing Adverse Childhood Experiences (ACEs): Leveraging the Best Available Evidence <https://www.cdc.gov/violenceprevention/pdf/preventingACES.pdf>



For More Info about the CEBC



Subscribe to our Email Alerts
for updates on our Program
Registry, news about the CEBC,
and resources:

cebc4cw.org/email-alerts

Visit our website: cebc4cw.org

Contact us: info@cebc4cw.org



What Happens Next?

- Review your Worksheet
- Identify one concrete action you can take this week
- Identify one approach/idea that your agency can implement and discuss it with your leadership



What Happens Next?

- Webinar recording and resources available within the next 48 hours.
- Raffle winner announced tomorrow at 9:00 AM PST on social media.
- Participants will receive a brief survey and Certificate of Attendance.
- Watch your inbox for the next issue of CalTrin Connect.

Stay connected for more free resources & trainings!



www.caltrin.org



[Facebook.com/caltrin](https://www.facebook.com/caltrin)



info@caltrin.org



[Twitter.com/cal_trin](https://twitter.com/cal_trin)



[linkedin.com/company/caltrin](https://www.linkedin.com/company/caltrin)

